



Instituto Politécnico  
de Castelo Branco

**Instituto Politécnico de Castelo Branco**

Cicek, Zeynep

## **New generation youth hostel in Istambul, Turkey**

<https://minerva.ipcb.pt/handle/123456789/3274>

### **Metadados**

<b>Data de Publicação</b>	2017
<b>Resumo</b>	Hostels have under gone a revolution in recent years, today they sit at the cutting edge of affordable accomonodation. Hstels focus on social interaction for millennials and eco-concions travelers are being targeted with globalization. Modern ravellers are reserving a place that's clean, comfortable affordable and design-minded. They are curions, creative and passionate lot so a new generation, hostels around the world are demonstrating that cheap chic is possible. This project also aimed at a...
<b>Editor</b>	IPCB. ESART
<b>Tipo</b>	report
<b>Revisão de Pares</b>	Não
<b>Coleções</b>	ESART - Design de Interiores e Equipamento

Esta página foi gerada automaticamente em 2024-05-05T14:34:35Z com  
informação proveniente do Repositório



PROYECTO DE DISEÑO DE EQUIPOS  
 ZEYNEP CICEK 20161394  
 ENTADORES  
 IM MANUEL  
 JUNTO

NEP CIO  
ORIENTADORES  
JOAQUIM MANUEL  
PROF. ADJUNTO

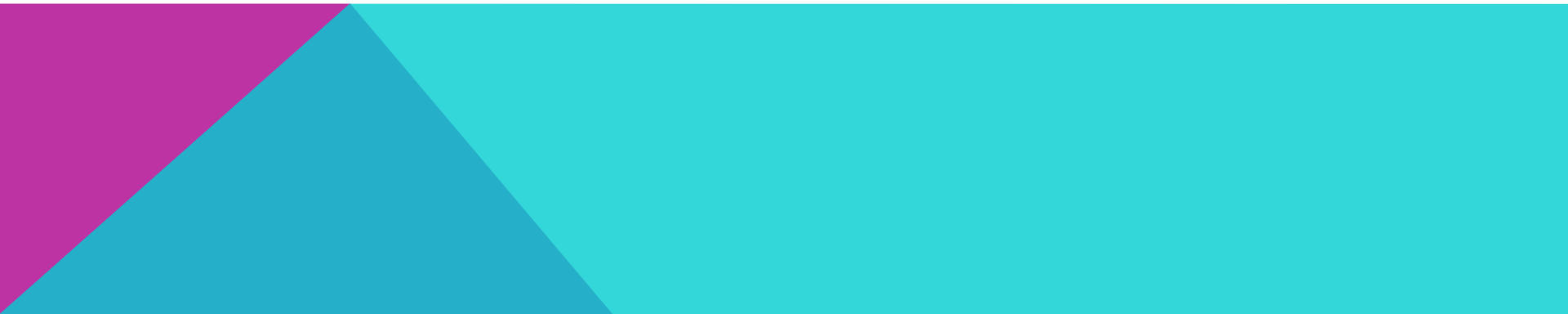
2017

Hostels have undergone a revolution in recent years, today they sit at the cutting edge of affordable accommodation. Hostels focus on social interaction for millennials and eco-conscious travelers are being targeted with globalization.

Hoteliers must understand today's traveler by getting to know your guest and adapting to his or her needs. We see more travelers impressed by simplicity and convenience rather than luxury and impractical amenities. With a new wave of young travelers coming into the scene, we are now seeing more priority placed on guest experience and community. Young travelers want to feel at home and feel connected with other guests and the hotel staff.

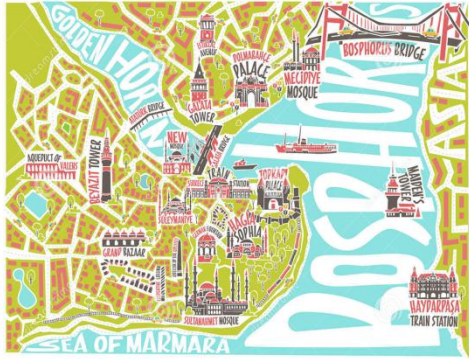
Modern travellers are reserving a place that's clean, comfortable, affordable and design- minded. They are curious, creative and passionate lot so a new generation hostels around the world are demonstrating that cheap chic is possible.

This project also aimed at a special design for the passion of young people to visit the world. It is aim to provide place which community- cultivating social experiences to travelers from abroad and locals looking for a staycation.

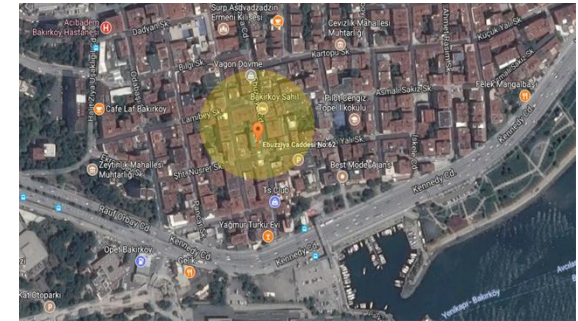




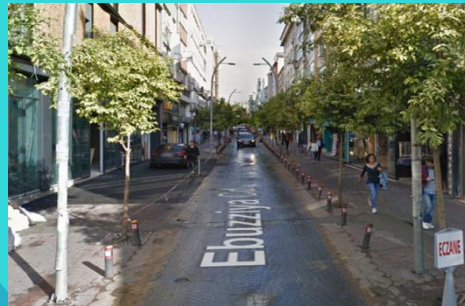
## SITE ANALYSIS



**Istanbul** is iconic location that straddle the cultures of Asia, Europe, Africa and Middle- East. Asia and Europe are connected to each other by the Bosphorus bridge. Because of this geographical location, the mainland Anatolia has witnessed the mass migration of diverse peoples, shaping the course of history. Home to countless civilizations, Anatolia has developed a unique synthesis of cultures, each with its own distinct identity, yet each linked to its predecessors through insoluble threads. Istanbul, has been in its time Muslim, Christian and officially secular. The most celebrated of all its monuments, Hagia Sophia, began as a church, became a mosque and is now a museum, and to my mind this overlapping of civilizations makes it all the more suitable as cultural capital of a continent becoming inexorably more various as the generations pass.



The location is quite ideal due to the proximity to the sea and shopping centers, as can be seen from pictures. It is also close to historical and tourist areas. Therefore, the turquoise color inspired by the sea used in the concept and the byzantine coloring inspired by history are also associated with the location.



## CONCEPT IDEAS

**LOCATION:** Istanbul, Turkey

**AIM TO:** Design New Generation Youth Hostel

**TARGET GROUP:** Young Travelers

**CONCEPT:** Overlapping Intersections

**STYLE:** Eclectic

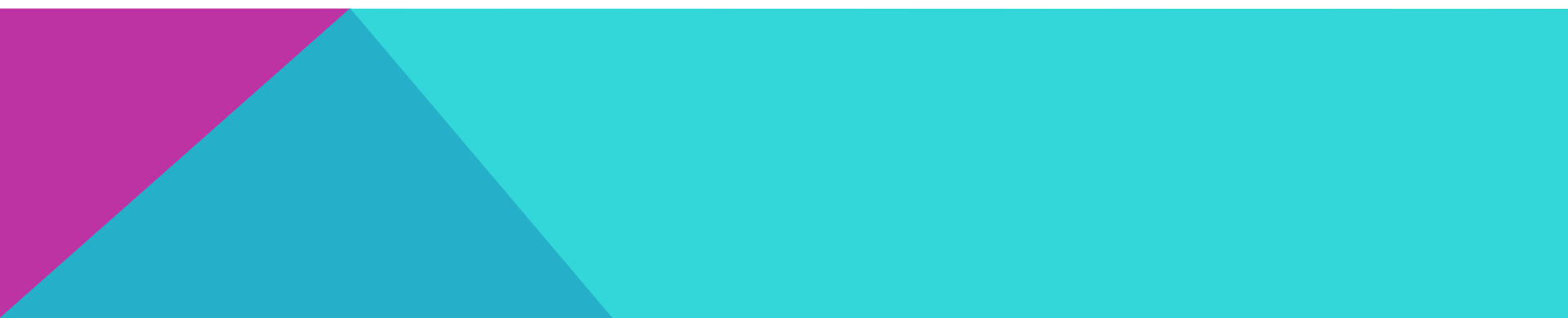
**KEYWORDS:** Intersection, Crossing Lines, Overlap, Transparent, Energetic

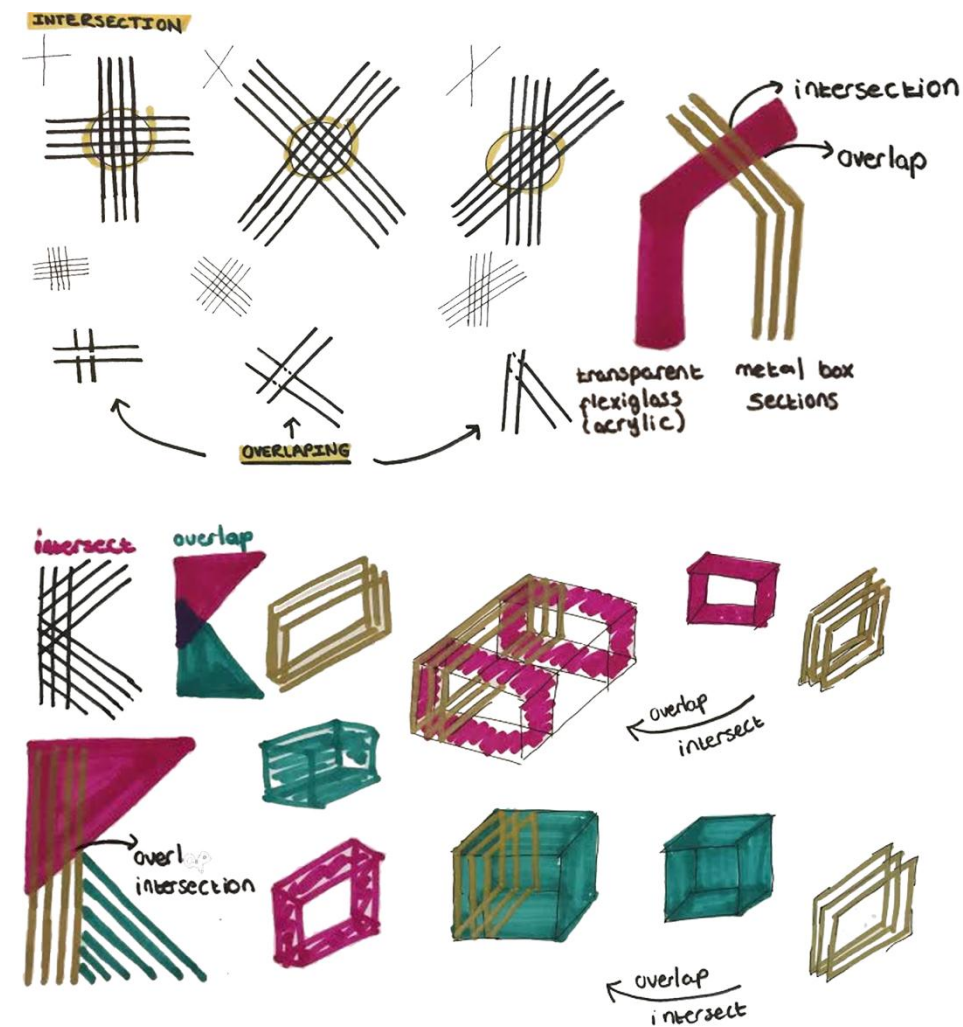
**NAME OF HOSTEL:** Konstanpol Hostel

INTERSECTING

PEOPLE  
CULTURES  
CONTENTS  
ROADS  
STYLES  
COLOURS

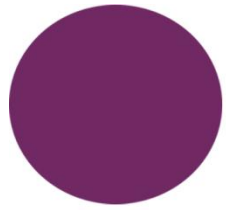
IN ISTANBUL



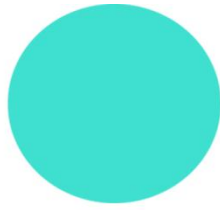


The hostel is one of the social areas that many people from different places meet. Firstly, the drawings were started by projecting the intersection of roads to the sketches. By intersecting the lines in different directions, the first item of my concept was formed. Common areas of intersections formed by 90 and 45 degree angles were determined. Istanbul has hosted many cultures and civilizations. During the centuries, the city has been layered on top of the layer. As a result of many cultures being overlaid in layers, a second element was created which is the location effect. The intersecting lines in the first item were considered as a surface. With their overlapping, the intersection areas were also identified as overlapping areas. Two colors, which are meaningful for Istanbul, were emphasized in color selection. These are byzantium, byzantine, golden or yellow and shades of turquoise.

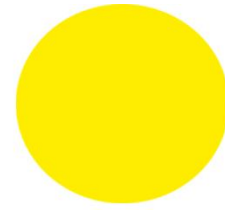




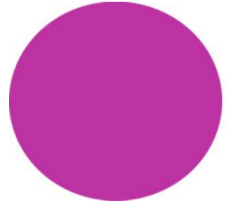
**Byzantium**



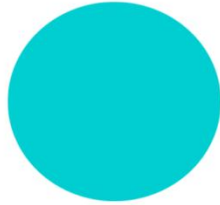
**Turquoise**



**Yellow**



**Byzantine**



**Dark Turquoise**



**Golden**

Judas tree or Eastern Redbud is at once Byzantine, Ottoman and Turkish, the color of emperors and empires. There is the walls of the Hagia Sophia. It is in the centuries- old frescoes. The Judas tree had a special place in Ottoman culture as well.

In the Ottoman period, Turquoise, which is the most popular color of Iznik tiles, has taken an important place. Many mosques are decorated with china produced in this color.

The golden color of power and nobility has been used by many empires in the past. He accompanied the Ottomans, Egypt, Byzantines and many other countries as a primary color. Hold on to the treasury, rings and gold and gold color is used in more quantities.

## BYZANTIUM AND BYZANTINE



Judas tree or Eastern Redbud is at once Byzantine, Ottoman and Turkish, the color of emperors and empires. There is the walls of the Hagia Sophia. It is in the centuries- old frescoes. The Judas tree had a special place in Ottoman culture as well. The city is rumored, for example, to have been founded when the Judas trees were in bloom. Similarly royal purple was the traditional symbol of the Byzantine emperors. The Judas tree had a special place in Ottoman culture as well. Judas tree festivals, which had their inception in the 15th century Ottoman empire, were known variously as 'erguvan' days or gatherings.



## GOLDEN AND YELLOW



The yellow color is not the direction, it is used to meet the center located in the middle of the four colors. If it is to be evaluated in terms of the state structure, yellow color means central power and power.

The Gold is known, strength and power, as a reserve for wealth and domination, has preserved its value since the world has existed. The golden color of power and nobility has been used by many empires in the past. It accompanied the Ottomans, Egypt, Byzantines and many other countries as a primary color. Hold on to the treasury, rings and gold and gold color is used in more quantities.



## TURQUOISE



The sky is always the symbol of glory and glory in the belief of the Turks. Sky is the name of its own color at the same time as it is located in the history of Turkish culture as a combination of time and space, which is desirous of reaching to the day-to-day starting from the belief of heavenly God, but at the same time hesitated from the causes and consequences of inaccessibility. It implies eternity, safety and peace. It contains the spirit world. The sky is blue.

In the Ottoman period, Turquoise, which is the most popular color of Iznik tiles, has taken an important place. Many mosques are decorated with china produced in this color.

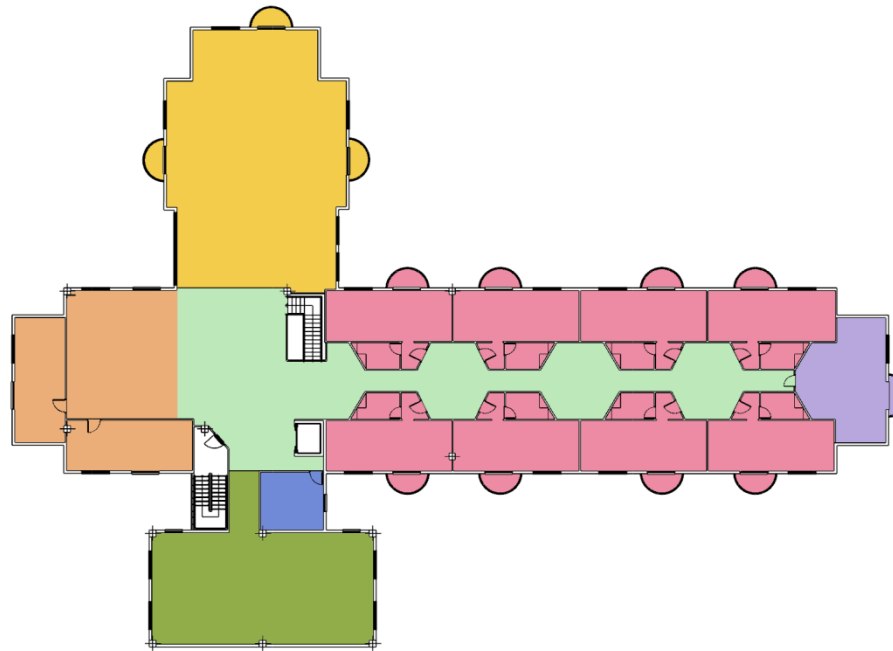


**While the logo of the hostel was created, the main ideas of the concept, the lines, the intersection and the overlap were taken into account.**

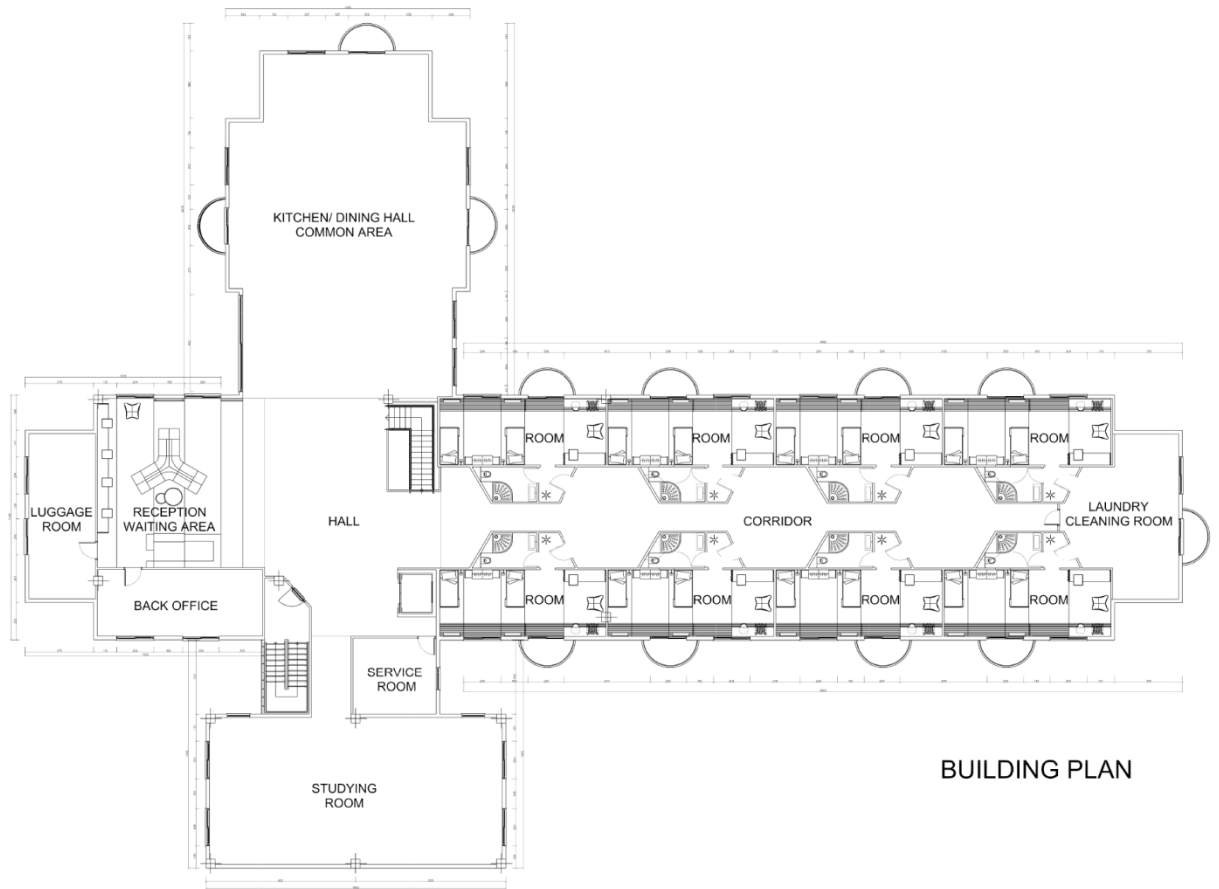
**Constantinople was the capital city of the Roman/Byzantine , and also of the brief Latin , and the later Ottoman empires. It was reinaugurated from ancient Byzantium as the new capital of the Roman Empire by Emperor Constantine the Great, after whom it was named, and dedicated. As a name, this was shorted as " Konstanpol ".**



## BUILDING PROGRAM



	KITCHEN DINING HALL COMMON AREA		STUDYING ROOM PRINT- OUT		LAUNDRY CLEANING ROOM		HALL CORRIDOR
	RECEPTION BACK OFFICE LUGGAGE ROOM		DORM ROOMS (FEMALE, MALE, MIXED)		STORAGE SERVICE ROOM RESTING ARE FOR WORKERS		

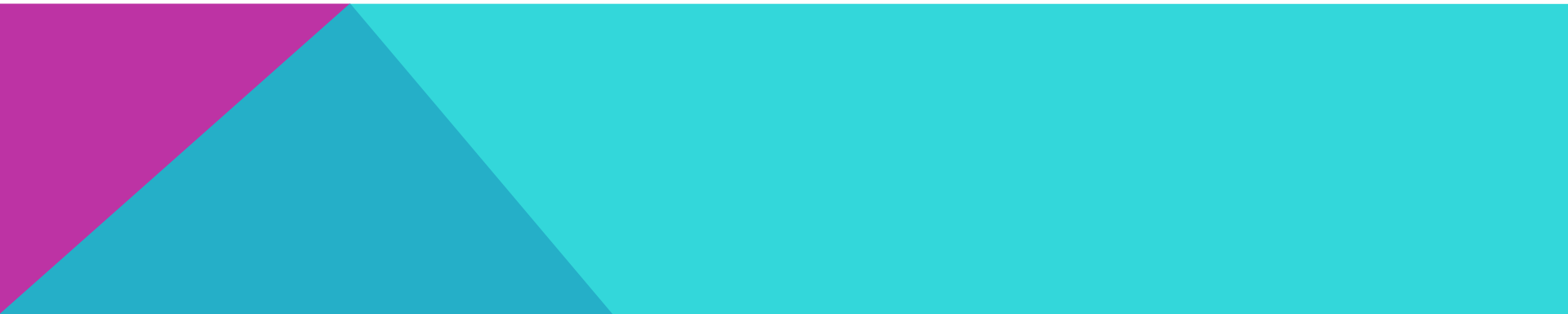


BUILDING PLAN

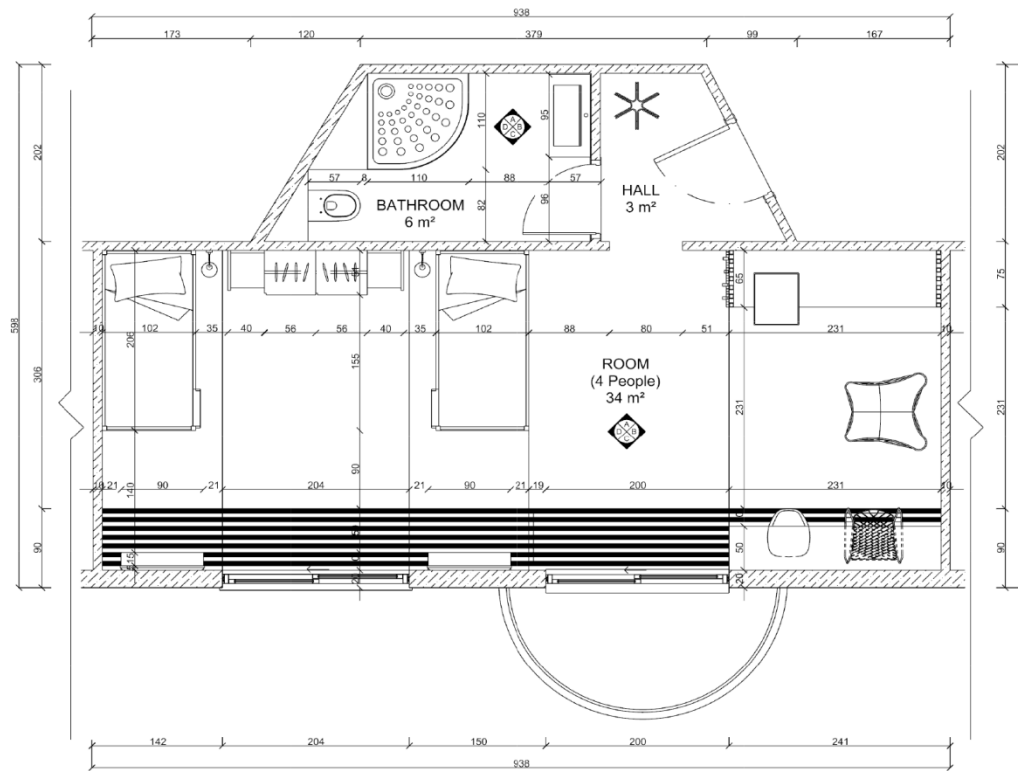
## **ROOMS**

**Rooms are for 4 persons and there are three types, female, male and mixed. It was aimed to create specific personal and common spaces in the rooms. The personal areas include the beds, the mirrors, the working table, and the rest area. However, these frameworks were intertwined. Common areas have also been established at the intersection of some personal areas. For example, the study and recreation areas have both a frame of their own and a frame that turns into a common area in the combination of these frames. In accordance with the determined concept, different materials, colors and fields were crossed and personal and social areas were obtained and a whole was formed.**

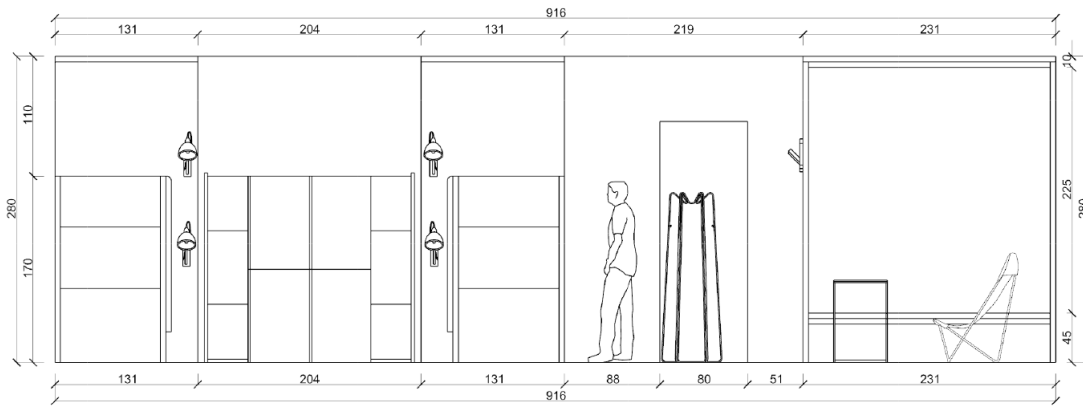
**In bathroom also used ceramic tiles which are important for istanbul. The choice of color was made in accordance with the concept. For the washbasin and the mirror, wood was used, which is one of the natural materials that also has a color in gold and yellow tones. In addition, a corian material was used as a sink material.**



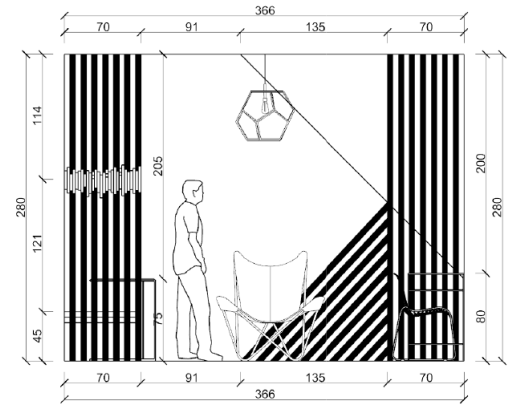




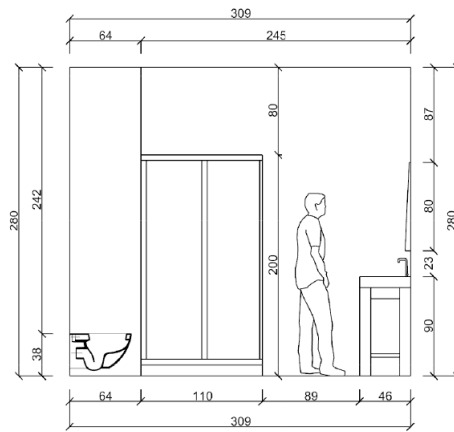
ROOM  
PLAN



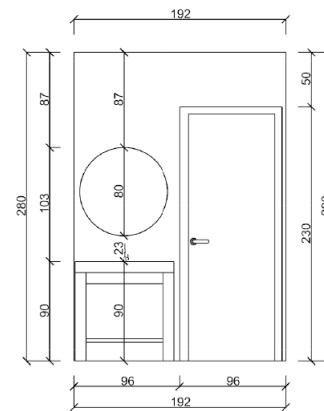
ROOM  
ELEVATION A  
1:50



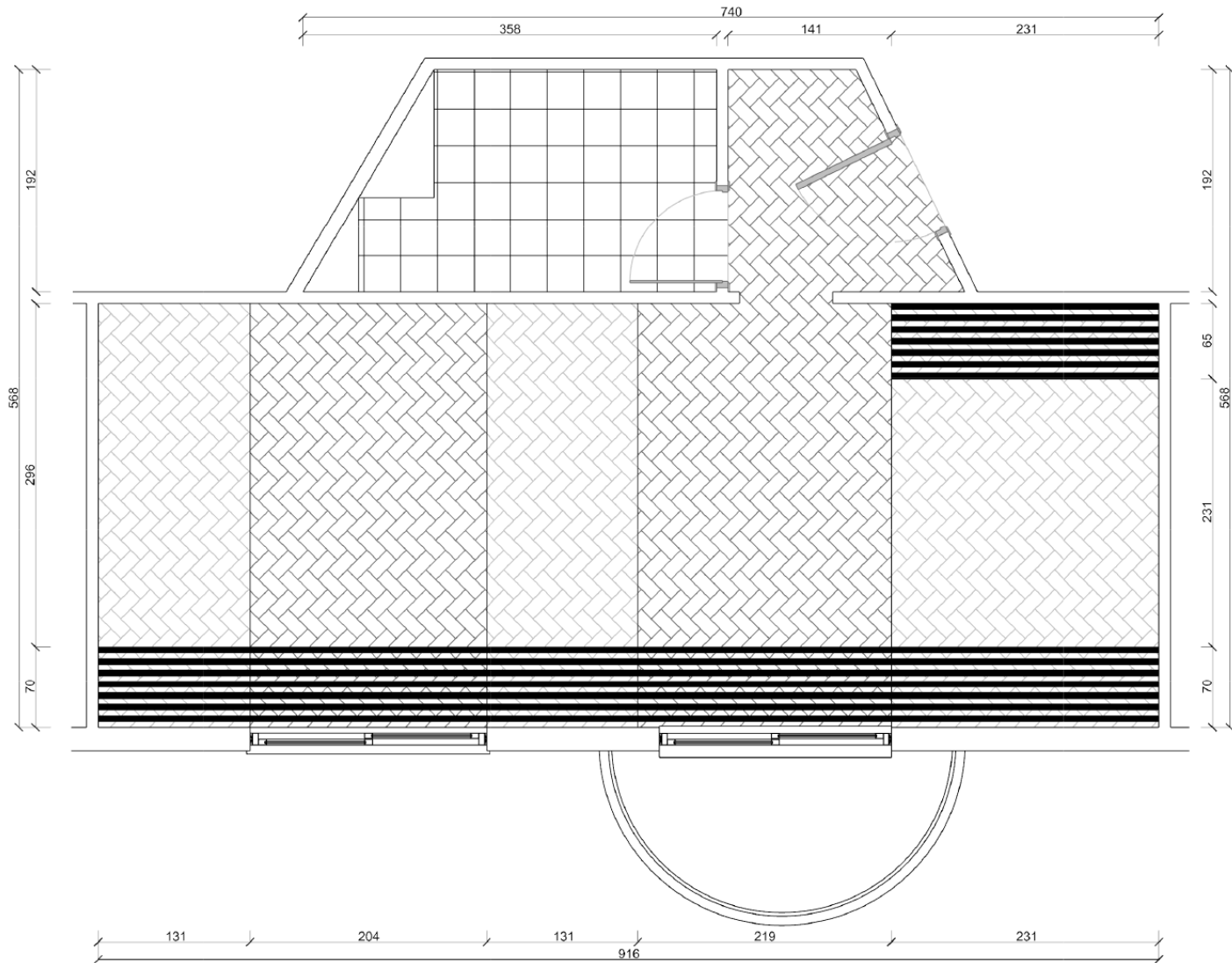
ROOM  
ELEVATION B



BATHROOM  
ELEVATION A



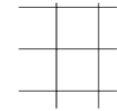
BATHROOM  
ELEVATION B



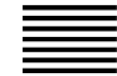
Essentials 120  
CASTEL 2  
NATURAL  
Vinly  
3 mm  
5334004  
Jotun



Essentials 120  
CASTEL 2  
NATURAL  
Vinly  
3 mm  
5334004  
Jotun  
Transparent  
Vinyl Cover  
Purple- Blue  
2.5 mm



Kaleidoscope  
Ceramic Tile  
Purple Gold  
30X 30 cm  
designed by Tinsley Lane  
Zazzle



Metallic Gold Glossy  
Vinyl  
2.5 mm

FLOOR PLAN

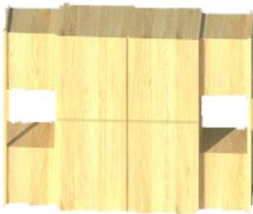




# FURNITURES OF ROOMS



**Newport**  
White wooden bunk beds  
L206X W102X H170 cm  
672 €  
Maisons du Monde



**Cabinets and Bedside tables**  
Ash wood  
L192X W51X H173  
designed by Zeynep Çiçek



**Mara Pendant Light**  
Finish: Polished Brass  
Material: Steel  
Max 60 W  
720 €  
Arteriors



**Mecanique metal wall light**  
adjustable arm  
154739  
Metal Gold  
H26 x W15 x DE36  
Max 40 W  
79,99 €  
Maisons du Monde



**Butterfly Chair**  
Purple fabric (%100 cotton),  
chrome frames  
490- 530 €  
BKF Originals



**Net Chair**  
RAL 1003 Signal Yellow  
Steel wire mesh  
379 €  
MARK Product



**Eames Plastic Chair DSW (H 43 cm)**  
34 mustard  
385 €  
Vitra



**Recessed spotlight**  
107116  
Die- cast aluminium body,  
aluminium reflector and  
tempered glass  
White  
Max 35- 70 W  
Stilas



**Uniline 70 Profile**  
Surface mounted  
Fluorescent tube  
UNI70 - PROFILE 68  
351 00 00  
ANO / W  
MAX.L / PROFILE: 6m  
Kg / m  
Delta Light



**Slim Desk**  
Yellow steel and powder- coat  
399 €  
Room and Board



**Gear Yellow C Table CB2**  
Yellow steel  
129 €  
Houzz



**Chocolat mirror**  
Y007V0V  
Glass  
100cm H 97cm  
290 €  
Natuzzi Italy



**Six / coatstand**  
RAL 1003 Signal Yellow  
Steel wire  
449 €  
MARK Product



**Umbra 318211-213 Sticks Coat Hook**  
Ash wood  
Molded wood construction  
30 €  
Umbra

## FURNITURES OF BATHROOM



**Stockholm Mirror**  
Walnut veneer  
Size: 31 1/2 "  
99.99 €  
IKEA



**Sento Wall-Hung Wc Pan**  
White  
Horizontal Outlet  
Ceramic  
VitrAclean surcharge is 37 €  
VitrA-hygiene surcharge is 75 €  
Vitra



**36" Lavare Vanity Rectangle Sink & Drawer**  
Corian sink  
Grey maple wood  
LAVARE-36N-D  
900 €  
Trueform



**Over- shaped Corner Shower Set**  
Ceramic  
110X 110 cm  
120 €  
Vitra

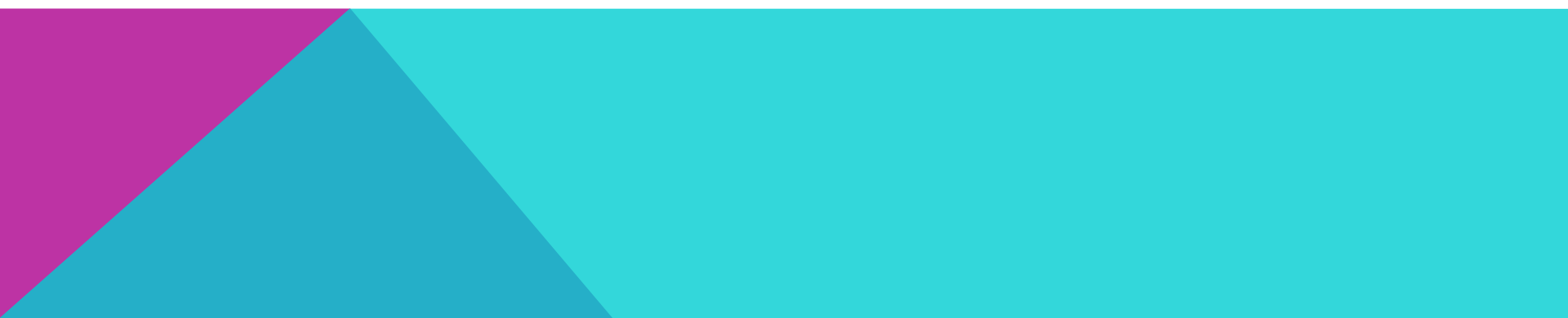
## MATERIALS OF BATHROOM



**Kaleidoscope Ceramic Tile Purple Gold**  
30X 30 cm  
17.25 € per tile  
designed by Tinsley Lane  
Zazzle



**White hygiene silk matt**  
Interior wall paint  
GP49354  
Marshall



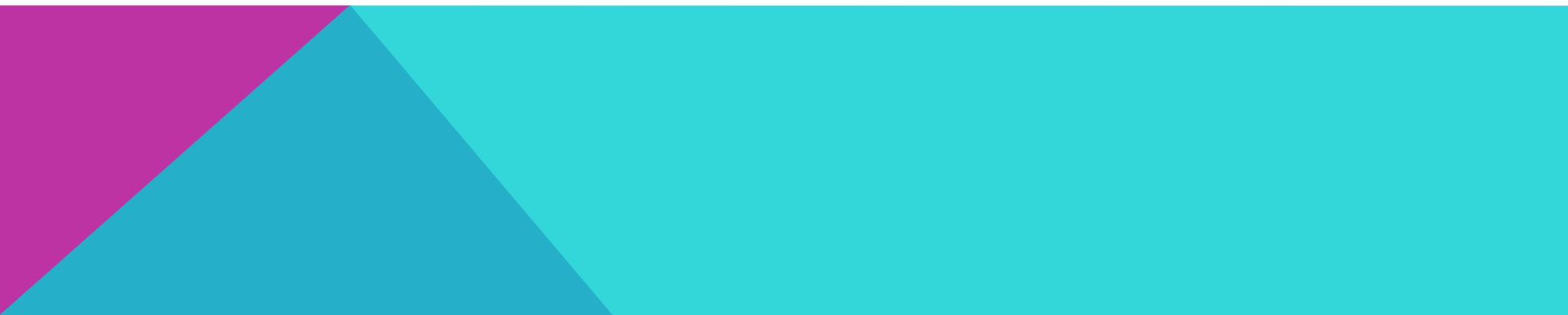
## ROOMS AND BATHROOM



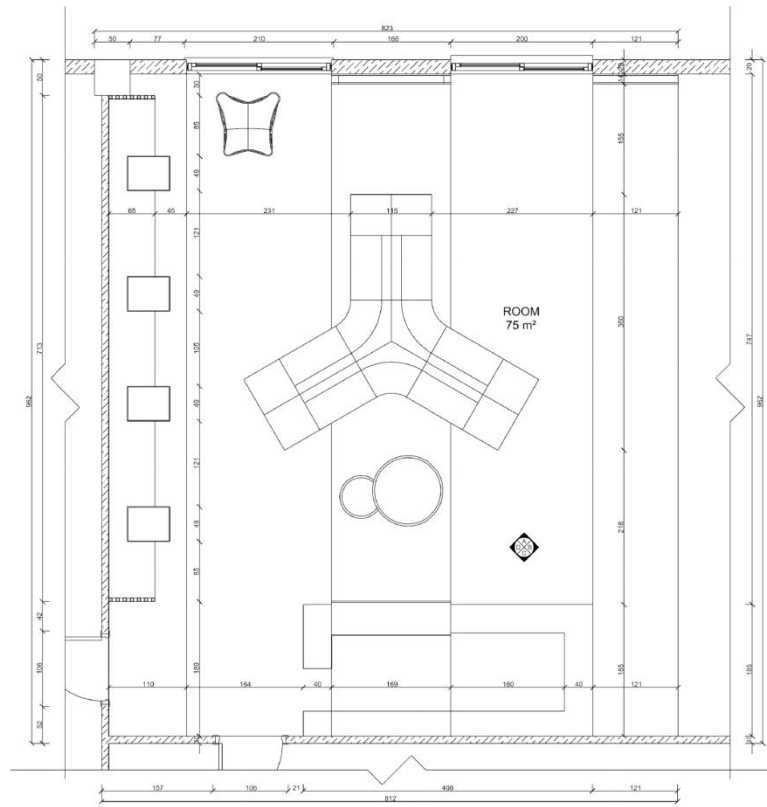
## **RECEPTION/ WAITING AREA**

**In the field of receipt again defined areas with different overlapping frames were created. Two of these are the ones that connect the waiting area to the reception desk. One of them connects the reception area to the suitcase room and back office door. The other has an area where they can take care of rest and small personal work for long-time guests. These four layers correspond to each other and form both personal and common areas. The furniture used in the waiting area was also inspired by the intersection of the lines in three different directions. In addition, the suitability of the concept has been increased with the model of the tables in the personal working area, which is on the seats.**

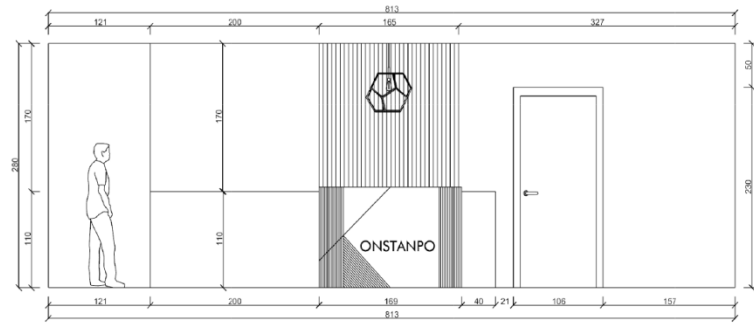
**It reflects the intersection of products used in illumination or their settlement. The lines in the different direction of the box in the center of the lamp in the middle and the downward bulbs represent each person, culture.**



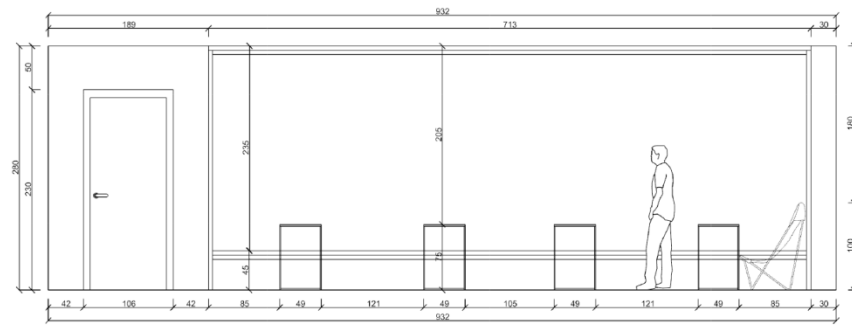




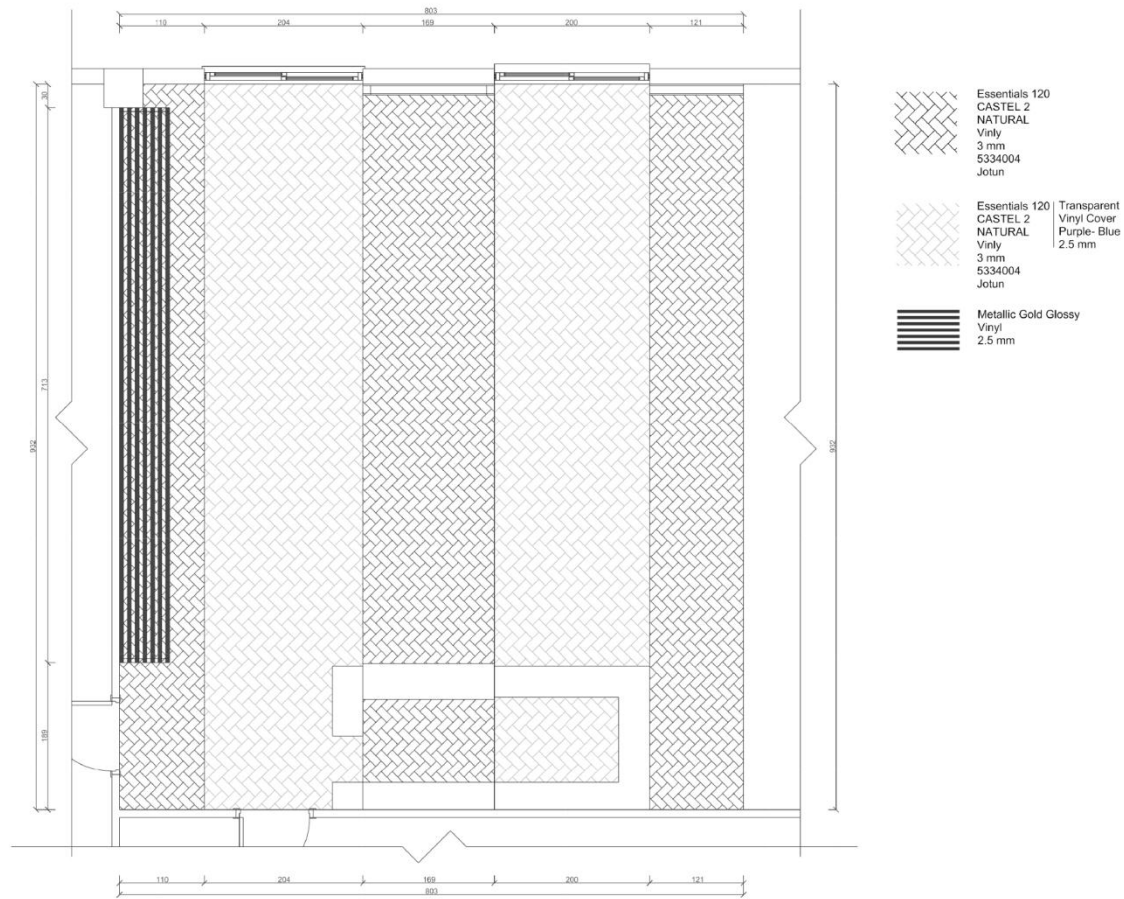
RECEPTION  
WAITING AREA  
PLAN



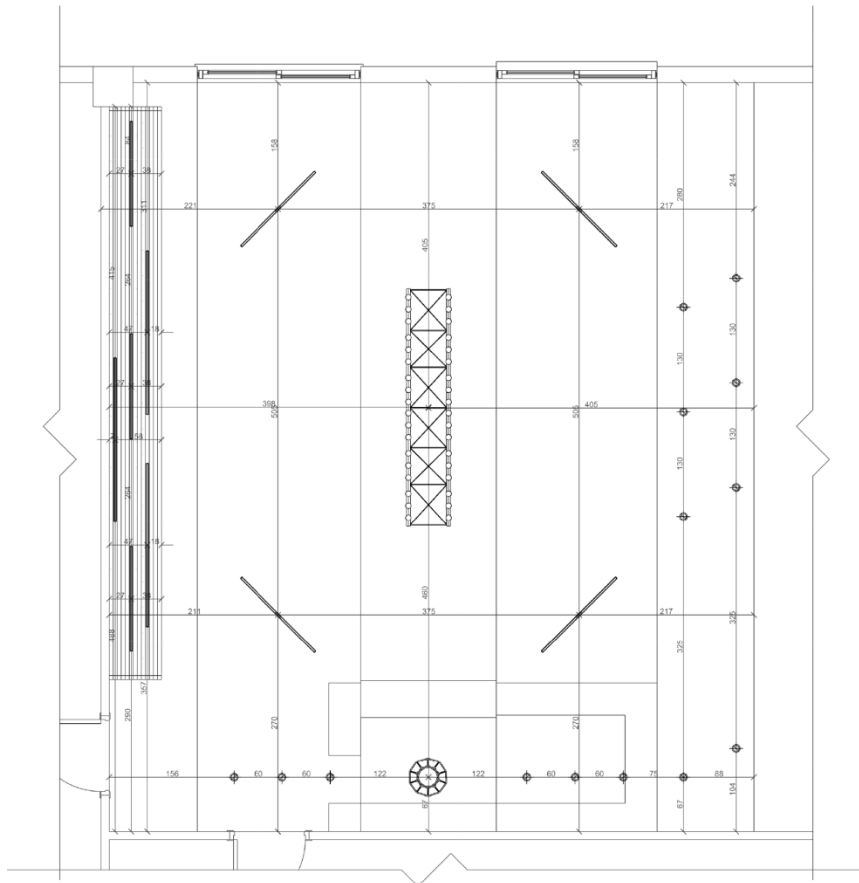
RECEPTION  
WAITING AREA  
ELEVATION C



RECEPTION  
WAITING AREA  
ELEVATION D



FLOOR PLAN  
1:50



RECEPTION  
WAITING AREA  
REFLECTED  
CEILING PLAN

#### LEGEND

	Symbolic	Mounting Type	Lamp Type	Brand	Power	Image
L1		Linear Module ( 204 cm )	LED	Delta Light	28 W	
L2		Linear Module ( 131 cm )	LED	Delta Light	28 W	
L3		Recessed Spot	LED	Stilas	26 W	
L4		Pendant Lamp	LED bulb	Mara	Max 60 W	
L5		Pendant Chandelier	LED bulb	Efine Home	Max 40-60 W	

Rectangular gold coloured  
metal box sections  
50X50 mm  
Brass

## FURNITURES OF RECEPTION AND WAITING AREA



### Studio / System

Hart Miller

Studio is a modular system of informal sofa and table elements that can be combined to form a flexible seating configuration or fixed banquette. A standard set of elements can be mixed with bespoke pieces to suit the characteristics of a particular interior.

MARK Product



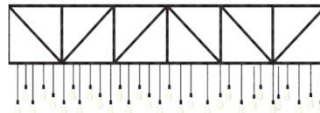
Butterfly Chair  
Purple fabric (%100 cotton),  
chrome frames  
490- 530 €  
BKF Originals



Gear Yellow C Table CB2  
Yellow steel  
129 €  
Houzz



Two Brothers Coffee Tables  
Wooden top, all supported by a carbon  
steel frame  
599,99 €  
Adelphi



Efine Vintage Industrial  
Rectangle Island Light Fixtures  
with Edison Lights  
Retro Rustic Wrought  
Iron Black Chandelier  
L295X W55X 40cm  
Max 360 W  
Efine Home  
249,99 €



Mara Pendant Light  
Finish: Polished Brass  
Material: Steel  
720 €  
Arteriors



Recessed spotlight  
107116  
Die- cast aluminium body,  
aluminium reflector and  
tempered glass  
White  
Max 35- 70 W  
Stilas



Uniline 70 Profile  
Surface mounted  
Fluorescent tube  
UNI70 - PROFILE 68  
351 00 00  
ANO / W  
MAX.L / PROFILE: 6m  
Kg / m  
Delta Light



## RECEPTION AND WAITING AREA

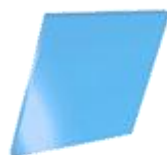


## MATERIALS

WALL



3mm Perspex Pink Acrylic  
Sheet - Diamond  
Polished Edges  
Price per m<sup>2</sup>: 53,5 €  
Inc. VAT  
Perspex



3mm Perspex Light Blue Acrylic  
Sheet - Diamond  
Polished Edges  
Price per m<sup>2</sup>: 53,5 €  
Inc. VAT  
Perspex



3mm Perspex Yellow Acrylic  
Sheet - Diamond  
Polished Edges  
Price per m<sup>2</sup>: 53,5 €  
Inc. VAT  
Perspex

White hygiene silk matt  
Interior wall paint  
GP49354  
Marshall

FURNITURE



Velvet fabric  
Purple



Rectangular gold coloured  
metal box sections  
Price per m: 5,1702 €  
50X50 mm  
Brass

FLOOR



Essentials 120  
CASTEL 2 /NATURA  
Vinyl  
3 mm  
5334004  
Jotun



Metallic Gold Glossy 12" x 10  
Foot Roll of Oracal 651  
Permanent Adhesive-Backed Vinyl  
for Craft Cutters, Punches and  
Vinyl Sign Cutters  
2.5 mm



Transparent Vinyl  
Purple  
2.5 mm  
300mmX 10 m  
39,99 €



Transparent Vinyl  
Cyan Blue  
2.5 mm  
300mmX 10 m  
39,99 €




Transparent Vinyl  
Yellow  
2.5 mm  
300mmX 10 m  
39,99 €

## **CONCLUSION**

**Hostels have undergone a revolution in recent years, today they sit at the cutting edge of affordable accommodation. Hostels focus on social interaction for millennials and eco-conscious travelers are being targeted with globalization. Today's hostels boast private rooms as well as stylish interiors, modern and quirky dorm rooms, ensuites, swimming pools, roof terraces and much more.**

**Modern travellers are reserving a place that's clean, comfortable, affordable and design- minded. They are curious, creative and passionate lot so a new generation hostels around the world are demonstrating that cheap chic is possible.**

**The goal of the project is to create a modern next generation hostel design for young people. In this process, concept was created based on location, examples and target group. Personal and common areas were designed with the intersection and overlap of people, cultures, continents, roads, styles, colors and materials.**



## **BIBLIOGRAPHY**

- <https://www.maisonsdumonde.com/>
  - <http://www.vitra.com.tr/>
  - <https://www.vitra.com/en-ch/product/eames-plastic-chair>
  - <//www.deltalight.com/en>
  - <http://www.markproduct.com/>
  - <https://www.dezeen.com/>
  - <http://www.archdaily.com/>
  - <http://www.pespex.com/>
  - <https://www.marshallboya.com/tr>
- 