



Instituto Politécnico
de Castelo Branco

Instituto Politécnico de Castelo Branco

Budzinska, Patrycia

**Family house in Poland : combination of wood
and concrete**

<https://minerva.ipcb.pt/handle/123456789/2545>

Metadata

Issue Date	2014
Abstract	This report is referent to the project of family house located in Poland. Considering that the building is new I have had free way to design the interior. The main objective of the project is the creation of an unusual and minimalist space. Creation a space according to the family life style....
Publisher	IPCB. ESART
Keywords	Interior design, Spatial/Open space, Minimalism, Wood, Concrete
Type	Thesis
Peer Reviewed	No
Collections	ESART - Design de Interiores e Equipamento

This page was automatically generated in 2019-10-05T20:56:23Z with
information provided by the Repository



Instituto Politécnico de Castelo Branco
Escola Superior de Artes Aplicadas

Final project report

Family House in Poland

Combination of wood and concret

Interior Design Stage

Patrycja Budzińska
20121522

Orientador
Ana Rita Vasco

Trabalho de Projeto apresentado à Escola Superior de Artes Aplicadas do Instituto Politécnico de Castelo Branco para cumprimento dos requisitos necessários à obtenção do grau de Mestre em designação domestrado, realizada sob a orientação científica do Ana Rita Vasco, do Instituto Politécnico de Castelo Branco.

Junho 2014

Abstract

This report is referent to the project of family house located in Poland. Considering that the building is new I have had free way to design the interior.

The main objective of the project is the creation of an unusual and minimalist space. Creation a space according to the family life style.

Keywords

Interior Design, Spatial/Open Space, Minimalism, Wood, Concrete

Contents

1. List of figures.....	4
2. Introduction.....	5
3. Visit and analysis of client needs.....	6
4. Concept.....	7
5. Research.....	8
6. Equipment.....	12
7. Legislation.....	15
8. Problem identification.....	17
9. Problem solution.....	17
10. Final proposal.....	18
11. Bibliography.....	23

1. List of figures

Image 1 – research of the combination of colors of different types of wood and concrete.....	8
Image 2 – Scheme of materials / colors applied in space.....	9
Image 3 – Table lamp „Grace”, shade with smoky glass or black fabric.....	9
Image 4 – Table lamp „Main”, black metal, diffuser made of white fabric.....	9
Image 5 – Table lamp „Pine cone”, black metal.....	9
Image 6 – Table lamp „Rocket”, white material, cable covered with a blue Fabric coating.....	9
Image 7 – Table lamp „Up-lite”, white material, frosted acrylic top.....	9
Image 8 – Hanging lamp „Facet”, transparent glass.....	9
Image 9 – Hanging lamp „Lotus”, black, porcelain socket with the wire, with black or white fabric coating.....	9
Image 10 – Hanging lamp „Nostalgic”, clear glass, red textile coating.....	9
Image 11 – Hanging lamp „Pine cone”, metal with copper finishing.....	9
Image 12 – Floor lamp „Amandus”.....	9
Image 13 – Floor lamp „Hello”.....	9
Image 14 – Floor lamp „Caravagio_Lightyears”.....	9
Image 15 – Floor lamp „Azalea”.....	9
Image 16 – Floor lamp „Atelier”.....	9
Image 17 – Carpet „Cubic”, multicolor.....	9
Image 18 – Carpet „Bound”, grey.....	9
Image 19 – Carpet „Rondo”, white cow leather.....	9
Image 20 – Carpet „Siglo”, multicolor.....	9
Image 21 – Carpet „Flash”, grey.....	9
Image 22,23 – loft inspiration designed by Maxim Zhukov (http://www.home-designing.com/2012/07/casual-loft-style-living).....	10
Image 24,25 – loft inspiratio designed by Ando-Studio (http://www.home-designing.com/2011/07/industrial-loft).....	10
Image 26,27 – loft interior designed by INT2 (http://trendland.com/scandinavian-minimalism-meets-mid-century-interior/).....	11
Image 28,29 – loft interior designed by Axis Mund(http://trendland.com/bond-street-loft-by-axis-mundi/).....	11

*„For a man, as for a bird,
world has many places where you can relax,
but has only one nest.”*
Oliver Wendel Holmes

2. Introduction

The loft interior is primarily a concept of open life, penetrating the housing together with the users and with the guest. From the office on the first floor can be seen living room, in the entrance smell cooking duck from the kitchen. High open spaces give us a lot of freedom of life.

In addition to the windows in steel, dark frames, foundation walls are finished in brick or concrete. They may also be visible wiring. A big plus are the heavy metal poles, visible construction or sheet metal used on the ceiling.

The bathroom may have a window, of course in the thin metal frame. Kitchen while it is not a separate room but rather intertwines with the living. Natural materials we use must also appear on the floor. They can be concrete floors, wooden, colorless or colored.

Loft living spaces change over night. Industrial, technical lighting brings out the texture of the walls and creates a climate space (lamps in white and black or metal with a visible bulb) also the furniture must have this style. All hand made items fit perfectly into the loft.

3. Visit and analysis of client needs

The first visit on the site was when the construction site was almost finished. As an Interiors Design student I asked the owner to design this interior. The response was positive.

Building of the house is located on ul. Daleka 83 Bełchatów, Poland. Building including groundfloor 153,2sqm (22,3sqm terrace included), first floor 153,2SQM and second floor 153,2sqm(11sqm and 12,5sqm terraces included).

After conversation with the family who is going to live in that house I knew their interest and expectations about the interior.

My client is a family of four.

She is a housewife who takes care about children. Ballet dancer in the past.

He is a photographer with his own small company.

First child is 6 years old girl interested about ballet.

Second child is 5 years old girl interested about ballet.

The whole family is travel and read amateur.

Needs of the client were:

minimalism, big open spaces

Colors: subdued, muted, light, shades of brown, grey

Materials: natural crude materials, wood, concrete, metal

Light: warm shades of light

Furniture: very simple classic furniture, simple subtle decoration

Because the building is new I did not do any changes. I designed the interior from the beginning considering just the load-bearing walls, position of the windows and the family needs.

4. Concept

My concept arises from the combination of two different points: the family interest and the materials.

The profession and interest of family was the most important factors to create the interior. As an designer I kept in mind what the client likes (colors, materials, decoration).

I used their professions and passion as my inspiration to create a perfect and original interior for them. I used photographs taken by my client and ballet motives as decoration in interior. I wanted to keep the connection between my clients and their new space to live.

Dominant materials: wood, concrete.

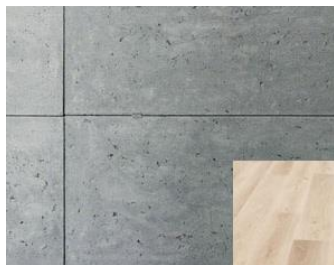
My clients are the sensitive artists with different taste of design. My concept was to create a minimalistic design without unnecessary equipments and decoration, including their passion in the interior. In the same time obtain a warm homely atmosphere despite of cold and minimalistic materials.

5. Research

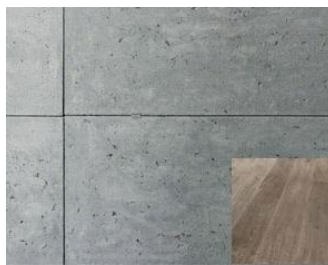
Before the work is started it is necessary to do a research. Research, with the main objective to analyze spaces of similar type of the interior, appears in the first step of the project.

On the beginning the most important was to split the space into rooms and put the space according to functionality and family needs. Analysis of the functionality of the individual rooms allowed for the continuation of the review in terms of materials.

A second step was to do a research about wood and concrete. To find an appropriate color which looks good with connection with concrete and choose the best coloristic option.



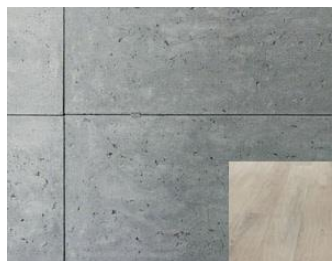
Authentic Style Dab Oslo 794



Grandeur Dab pustelnika 601



Grandeur Dab Roussillon 671



Grandeur Dan stary renesansu 592



Impressio Dab Frappuccino 930



Impressio sosna postarzana 693

img1

A third step was research about colors according to the client needs.



img. 1



img2

A fourth step was to find a appropriate furniture, light and decoration according to results which gave the previous steps.



img3



img4



img5



img6



img7



img8



img9



img10



img11



img12



img13



img14



img15



img16



img17



img18



img19



img20



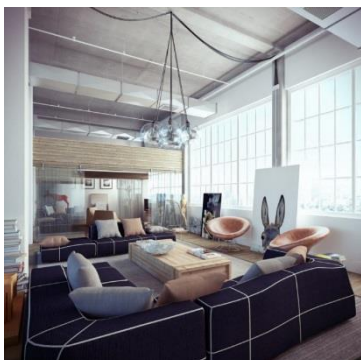
img21

Inspirations



Fledgling designer **Maxim Zhukov** has created these wonderful interior of a trendy young loft space, full of the type of casually 'thrown-in' style that just works. The bedroom sees a mini mezzanine level, to make use of the lofty ceiling height, which is utilized as a small study area. The separation of work zone from the bedroom area creates a more relaxing sleep space once the busy day is done. A distinctly industrial style runs throughout the living and kitchen areas, with exposed wiring and ducting above a large extractor fan looming over a modern kitchen island, and the familiar black and yellow sign strips that are usually seen on building sites. The furniture in these spaces does however have a softness about it that offsets the coldness of exposed brick walls and the angular junctions of utilitarian aspects.

Img. 22,23



Israel-based designers, **Ando-Studio**, were prompted with the design for this industrial loft out of a desire to create an open and eclectic free space, with a lot of attention paid to detail. They sought to create an authentic loft with life, movement, and continuity. Spaces were dressed with plenty of books, photos, and art and they installed large windows, to allow plenty of natural light inside. The materials most striking in the loft design are wood, silver metal, glass, and a lot of leathers which are used for the furnishings. Serious and muted colors were used, ranging from tans to dark navy blues. All of this combined, makes for an industrial, but stylish loft for the modern-day creative individual.

Img. 24,25



Russian architecture firm **INT2** decked out this apartment in a clean but not exactly minimalist aesthetic. Scandinavian armchairs and tables play off the neat feel of the sparkling bleached wood floors, dusty blue accent walls and whitewashed roof beams, while splashes of candy orange and red turn up in carpets, lamps and even the twee fox prints hanging in the living area and bedroom.

Img. 25, 26

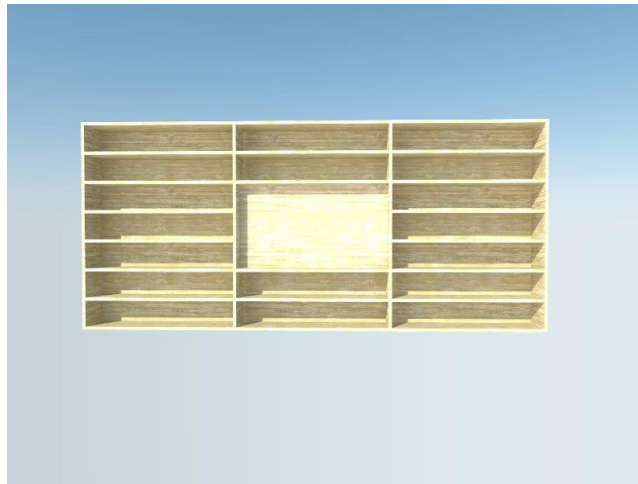


It's in Manhattan's East Village sits the Bond Street Loft, designed by creative design firm **Axis Mundi**. Be it the textured tiles lining the walls, the romance that thrives between the contemporary fixtures and classical, Romanesque pillars or the grey color palette, it's a space curated with taste in mind. Modern and impressive, the Bond Street Loft is a stunning apartment that, with its understated edge, takes the concept of expanse to another level of style.



Img. 27, 28

6. Equipment

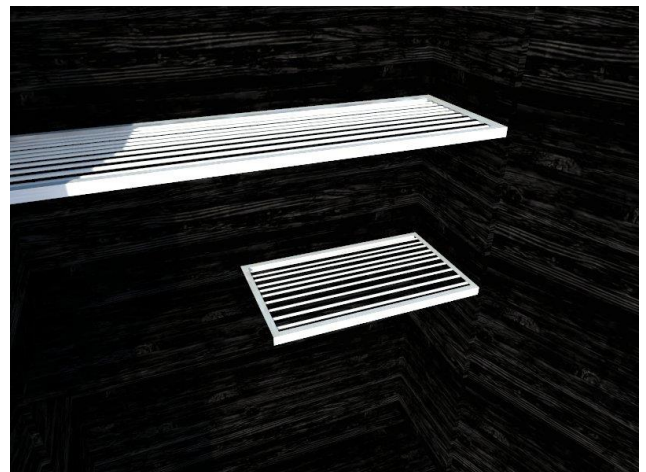
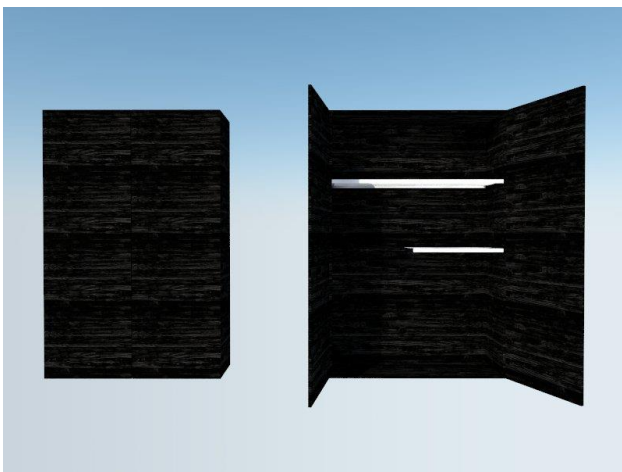


Bookcase

Made from the same type of wood which is on the floors and walls on the rest of the house (Burgundy Oak 672).

On the middle is place for standing or hanging tv.

Dimensions[cm]: Widht 630 Depht:51 Height:315

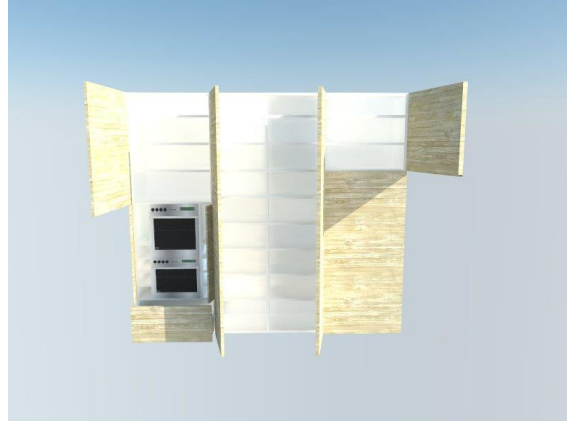
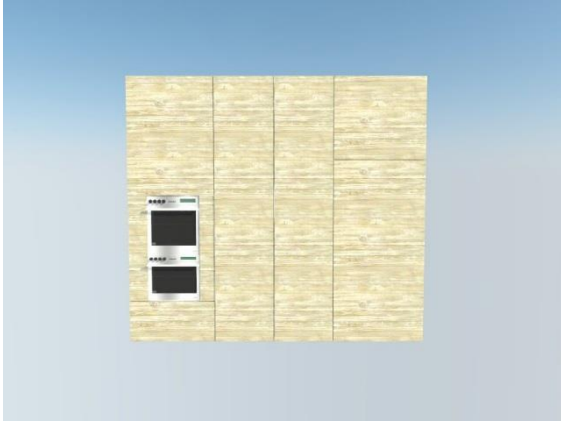


Cupboard in the hallway

Made of dark wood.

The lower part is for the washing machine and clothes dryer. In the upper part is a place for hanging wet clothes.

Dimensions[cm]: Widht: 200 Depht:60 Heigh:315



Kitchen cabinet

The external part of the cabinet is made of wood which is on the floors and walls on the rest of the the house (Burgundy Oak 672).

The inner part of the cabinet is made of white mdf.

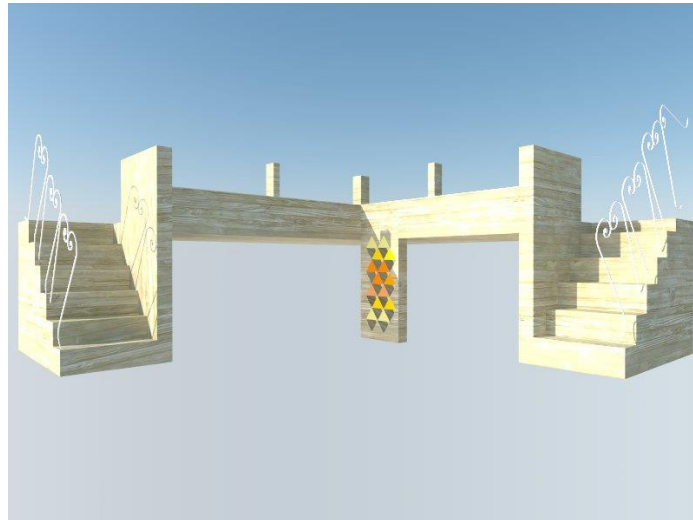
Cabinet is divided into three parts. In the first part there are two drawers, top shelf and space for double oven. On both sides of the oven are small shelves. In the second part there are eight shelves. In the third part is a place for a fridge (to built-in).



Kitchen island combined with worktop

Made of wood which is on the floors and walls on the rest of the the house (Burgundy Oak 672) and metal.

The island kitchen has space for the kitchen sink and induction hob. Under the island there are closed shelves. The door of these cabinets are made from metal. In the long part of the furniture are cabinets under the worktop. The island is designed so that you can sit down and eat a quick meal.



Storey module furniture with beds

Made of wood which is on the floors and walls on the rest of the the house (Burgundy Oak 672).

Designed in the shape of the „L” letter.

In the upper part there are two mattresses [90cmx200cm], space for bedding, pillows and plush toys. Over the mattresses can be attached canopy.

Balustrade on the floor is 30cm. In the lower parts of the furniture is a place for interesting design space for the children. In support of the furniture are small holes in the shape of triangles.

On both sides of of the furniture is six steps [15cm each]. Decorative railing on the stairs. The height of the railing is 50cm.

7. Legislations

Minister of Infrastructure Regulation from 12 April 2002 regarding the technical requirements of buildings and their location. (Dz. U. z 2002r. Nr 75, poz. 690, z późn. Zm)

Legislation	Poland
Minimum height of the rooms	- 2,5m - 2,2m(with ventilation) - 2m utility, technical rooms
Widht of the rooms	Bedroom for 1 person - 2,2m Bedroom for 2 people - 2,7m Kitchen - 2,4m
Widht of the corridor	- 1,2m (minimun) - 0,9m (permissible width of the corridor in length up to 1.5 m)
Stairs	Widht: minimum 0,8m Lenght: minimum 0,27m Height: maximum 0,19m Maximum 19 steps in one over
Bathroom	- shower cabin area minimum 1,5m ² - the minimum widht of shower cabin is 0,9m - toilet bowl has to be directly next to the shower cabin
People on the wheelchair	- the minimum area in every room is 1,5m ² - the minimum shower area is 2,5m ² - the minimum showr widht is 1,5m ²

	<ul style="list-style-type: none">-toilet bowl has to be directly next to the shower- the minimum door width is 1m- the minimum corridor width is 1m
--	--

8. Problems identification

The newly built building according to the clients needs.

That gives me:

- no possibility to change the layout of the walls.
- no possibility to change the layout of windows.
- no possibility to change the position of the stairs.

9. Problem solution

- Designing according to the already existing building.
- Finding solution for the existing walls and windows.

10. Final proposal

The whole house has been divided into 3 parts. Each floor is a separate space designed at an angle of people who will live there.

Ground floor - living space

The main goal of the design was to create a ground floor space for all family members. The space on the ground floor is a large and open. The only closed space is the toilet with the shower placed under the stairs.

Distribution of the ground floor into the rooms:

- Anteroom

In the anteroom is a small sofa, standing hanger and a large mirror. Furniture which I choosed are low, and they don't cover the large windows with the milk glass which is from the floor to the ceiling.

- Hall

In the hall is a shoe cabinet and built-in wardrobe with space for washing machine and tumble dryer (designed by me in a folder of materials). Under the stairs is a small wardrobe and drawers.

- Bathroom

It is a small toilet with the showe, placed under the stairs. In the bathroom is sill cabinet with mirrored front. Sink is the countertop. Ceramic toilet bowl.

- Kitchen

Open kitchen. The kitchen has an island (designed by me, a folder of materials) combined with a table top under the window. The island has a sink and induction hob. Above the induction hob is a hood attached to the ceiling. Under the island are built cabinets and dishwasher. The island is designed so that you can sit down and eat a quick meal.

Another piece of furniture in the kitchen cabinet is made-to-measure (designed by me, a folder of materials), which is a double oven and built podójna fridge.

- Living room

The living room is large and open. The main element of the living room is a large cream sofa, on which is a place for the whole family and potential guests. In front of the sofa is a wall separating the living room from the hallway with built-in fireplace and place for holding wood. Next to the sofa is a table for eight people with soft, light gray chairs.

On one wall is a bookcase (designed by me, a folder of materials) where is designated place for the placement of a hanging or standing TV. The living room has also standing lamp with a black lampshade. On the walls hanging photographs in a variety of formats and made by the owner.

1st floor – Kids area

The space on the first floor is designed primarily for children and their needs and interests. Therefore, the entire floor is different colors from the rest of the house. There is also a small part meant for guests.

Distribution of the ground floor into the rooms:

- Corridor

On the corridor is long, wooden cabinet, which at the same time fulfills the role of the stairs barrier. On the top of the cabinet are the flowers. From the hallway there is a direct entrance to the rooms: Toilet for children, guest toilet, children's room, ballet room and guest room.

- Bathroom Children

In the bathroom for kids is built oval bathtub. In front of the bathtub is a long sill cabinet with two recessed in countertop sinks (one for each girl). There is also a small toilet bowl for children. The bathroom has a large shower designed primarily for guests.

Main decorative element is a wall painted a pattern of small colored

triangles. On the wall are two small, triangular mirrors over each of the basins.

All the furniture in the bathroom are designed or selected according to the needs of children (dimensions, etc.).

- Toilet guests

It is a small guest toilet. On the front wall is a cabinet with drawers with recessed sink in the countertop. On the wall above the cabinet is a mirror. The rest of the walls is covered with wood.

- Children's Room

On the right side of the entrance is a wardrobe. On the opposite wall is a large mirror.

Main Square decorative element is a two-level room furniture (designed by me, a folder of materials). On the higher pieces of furniture is a place to sleep with a green, translucent canopy and place for sheets, pillows and plush toys. For each mattress is designed separate entrance up the stairs with a decorative balustrade.

Below a place to sleep is play and reading corner. There is a small library, a small sofa, armchairs and two hanging swings. The walls are painted in the shape of triangles in the Purple and grey color.

On the floor under the furniture is light gray, soft carpeting.

Furniture suport is decorated with a holes in the triangles shape and small colored triangles.

Under the window is a long countertop which can be used as a desk and a place to study for girls. On one wall is a large, three-piece closet located under the stairs.

An interesting decorative element is the color of the walls above the beds. The wall is painted in the triangles shape with green and yellow colors.

Near the window, under the stairs is a hidden passage to the Hall of ballet. The door to the secret passage are painted in the shape of triangles in green and yellow colors (continuation of the walls).

- Ballet room

Large space to dance for the kids.

On two adjacent to each other walls is a mirror. On one of the wall is a special ballet tube attached. Another wall is painted in a varying thicknesses stripes on the white and pink color. In the ballet room is also wooden ladders attached to the wall near window.

The ballet class has two large windows. Under the windows is a wooden seat (made from the same material as the floor), on which is a lot of bright pillows.

The ceiling is paint in white to bright the room. From the ballet hall is a a hidden passage to the girls room.

-Guest Room

The decorative element in the guest room is a platform on which is a rest of the furniture.

The platform has a 40cm of height and is on the same level as window. On the platform is comfortable yellow armchair, white desk with a white hung shelves above. The mattress is built into the platform. Space for the clothes is built into the steps of the platform(the drawers).

2nd floor – Parents area

The second floor is exclusively for parents. The space is open. It does not have any closed space.

Distribution of the ground floor into the rooms:

- Wardrobe

Open wardrobe with two large wardrobes. The first wardrobe: high, wooden, four-pieces wardrobe. Placed next to the stairs.

The second wardrobe (designed by me, technical drawing). A large, four-pieces wardrobe. Three parts of the wardrobe are intended for keeping clothes. One part is intended for the fireplace. From the wardrobe side closet has a dark glass door. From the bedroom side closet is covered with a perforated black metal.

- Bedroom

Open bedroom located on the 20 cm platform (designed by me, a folder of materials). The bed is cased from two sides. Under the window is a wooden box for bedding reaching to the level of the window (70cm). Double mattress built into the platform. Two bedside lamp on the box with drawers.

Two tall vases with dried twigs as a decoration. bright, long-haired carpet.

- Bathroom

The open bathroom. Large, Circular bath with jacuzzi function built into the platform with a height of 60cm. Platform and the walls are wooden.

Orchids decorative.

-Toilet

The semi-open toilet. On one wall is the toilet bowl and bidet. In front of this wall are two tall cabinets with one lower cabinet with drawers in between. Cabinet with the drawers has recessed sink. On each of three walls over the sink is a mirror.

- Office

On one wall is a bookcasem from the floor to the ceiling. Under the window over the entire widht is open cabinet for documents (height 60cm). In the office is also comfortable armchair and large, dark wooden desk placed at one of the walls. Above thte desk i a mirror.

Because the owner is a photographer, on the cabinet under the windows the are the camres stands, where are the different models of cameras.

- Relax room

Open space for office. The relaxation room is gray sofa, standing lamp and green-blue carpet. Behind the sofa is a wooden cabinet, Which at the same time fulfills the roles of the stairs barrier.

11. Bibliography and Webgraphy

Book of architectural and construction design „Neufert”

Publisher: Arcade, Language: Polish, Year of publication: 2011

<http://www.repetto.com/uk/repetto-window-displays.html>

<http://www.repetto.com/uk/world-of-repetto>

<http://homestorming.blogspot.pt/2014/04/96-inspiracao-tendas-de-indios-para.html>

<http://www.careersininteriordesign.com/what.html>

http://www.balterio.com/pl/pl/laminate_faq_solutions

<http://www.at-fabrykaswiatla.pl/>

<http://www.skandynawskie.pl/>

<http://z-concept.pl/>

<http://www.galeriaoswietlenia.pl/42-oswietlenie--podlogowe>

http://www.garwolin-starostwo.pl/index.php?option=com_content&view=article&id=547:wymaganie-dotyczace-budynku-mieszkalnego-i-letniskowego&catid=96&Itemid=504

<http://www.home-designing.com/2012/07/casual-loft-style-living>

<http://www.home-designing.com/2011/07/industrial-loft>

<http://trendland.com/scandinavian-minimalism-meets-mid-century-interior/>

<http://trendland.com/bond-street-loft-by-axis-mundi/>