



Instituto Politécnico  
de Castelo Branco

**Instituto Politécnico de Castelo Branco**

Akçay, Gizem

## **Selfcare studio in Brasil**

<https://minerva.ipcb.pt/handle/123456789/3616>

### **Metadados**

<b>Data de Publicação</b>	2020
<b>Editor</b>	IPCB. ESART
<b>Tipo</b>	report
<b>Revisão de Pares</b>	Não
<b>Coleções</b>	ESART - Design de Interiores e Equipamento

Esta página foi gerada automaticamente em 2024-04-28T07:54:34Z com  
informação proveniente do Repositório



# SELF CARE STUDIO IN BRASIL

gizem akçay



Lina Bo Bardi is a paradigm of modern Brazilian architecture. Original Italian, she arrived in São Paulo in the 1940s with her husband Pietro Maria Bardi. The couple no longer left the country. In 1951, Lina became a Brazilian citizen, a year that coincides with the inauguration of her first work, which was no less than the Casa de Vidro, located in the neighborhood of Morumbi, south of São Paula.

Initially conceived as the couple's home and headquarters of the Contemporary Art Institute, Casa de Vidro was the first residence in the neighborhood, until then dominated by the Atlantic Forest, when the expansion of the city began to occupy the other bank of the Pinheiros River. Johnson lived in it until her death in 2005, just as Lina lived her entire life in her Glass House.





**LINA BO BARDI –  
GLASS HOUSE**

## LINA BO BARDI AND GLASS HOUSE



**MIES VAN DER ROHE -  
FARNWORTH HOUSE**



**PHILIP JOHNSON-  
FARNWORTH HOUSE**

Inspiring and, at the same time, inspired by the Glass House, Mies van der Rohe finished his prestigious Farnsworth House in 1951, in Illinois, United States. The three houses are marked by the transparency of the large glass panels and the lightness of their steel structures. They were designed almost simultaneously and, in addition, with the exception of Johnson, Mies and Lina build their homes in countries other than their own. Three projects that have a lot in common, but due to the consistent design and construction of each one, they are able to identify themselves as local and stand out individually.





**LINA BO BARDI –  
GLASS HOUSE**



**MIES VAN DER ROHE -  
FARNWORTH HOUSE**



**PHILIP JOHNSON-  
FARNWORTH HOUSE**

## LINA BO BARDI AND GLASS HOUSE

More than genealogical achievements, the Glass House, the Glass House and the Farnsworth House are made in parallel. The vertical structure consists of slender steel tubes, arranged in a modulation of four modules in width by five in depth. They form the pilotis of the residence and advance through the upper floor slab until they reach the covered slab, both of reinforced concrete. Thus, the house sees itself as a transparent floating box in the middle of nature. In order to take full advantage of the privileged view that unfolds to the city, the house was designed with the minimum of protection, in such a way that the large windows do not have a railing. Thus, at the same time that the house acts as a refuge, it provides a life in constant contact with nature and contemplation of the landscape. The Bardi couple intended, with that, to enjoy the sunrises and sunsets, the rains and storms, the natural changes.



The house is divided into two well-defined portions. The first represents the living and dining room, dominated by large glass openings. It occupies the entire width and the first two modules of the residence's depth. At the center of this room is a patio, in which a tree from the local vegetation was kept. In addition to serving as an element of climate mitigation, enabling cross ventilation on hot days, this element reinforces the desired contact with nature, in addition to, once again, mentioning modern masters, An open staircase, made with steel structure and steps granite, is the main access to the upper floor of the house. Its simple line design is the only element that stands out in the void of the pilotis.

## LINA BO BARDI AND GLASS HOUSE



## LOCATION AND INFORMATION OF PROJECT AREA

**Material:** Concrete, Glass

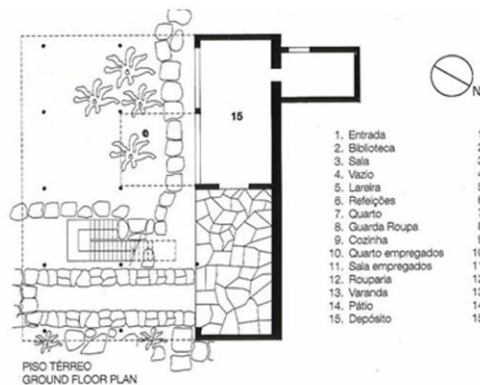
**Project Year:** 1950

**Location:** Morumbi, São Paulo, Brasil

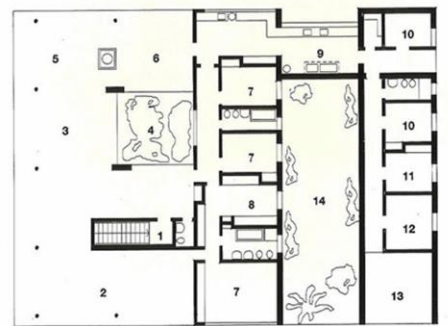
**Typology:** Residential  
Architecture/Houses

Located on a 7,000 square meter plot, the facility was the first residence in the Morumbi district. The area is now Morumbi's rich suburb, but a more domestic version of the rainforest has relocated around the house and is hidden from the landscape.

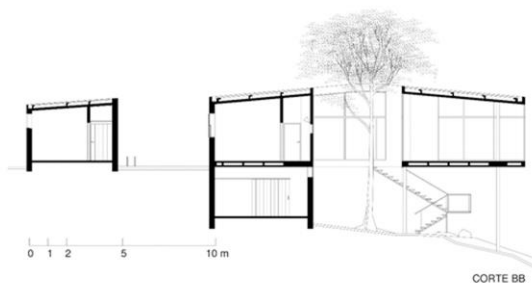
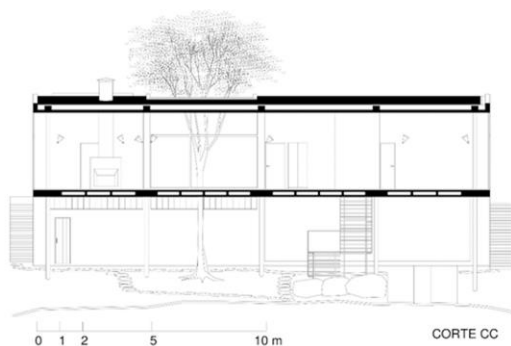




- |                       |                           |
|-----------------------|---------------------------|
| 1. Entrada            | 1. Entrance               |
| 2. Biblioteca         | 2. Library                |
| 3. Sala               | 3. Living room            |
| 4. Vazio              | 4. Space                  |
| 5. Lareira            | 5. Fireplace              |
| 6. Refeições          | 6. Dining room            |
| 7. Quarto             | 7. Bedroom                |
| 8. Guarda Roupa       | 8. Clothes closet         |
| 9. Cozinha            | 9. Kitchen                |
| 10. Quarto empregados | 10. Servant's bedroom     |
| 11. Sala empregados   | 11. Servant's living room |
| 12. Rouparia          | 12. Wardrobe              |
| 13. Varanda           | 13. Veranda               |
| 14. Pátio             | 14. Patio                 |
| 15. Depósito          | 15. Storage               |

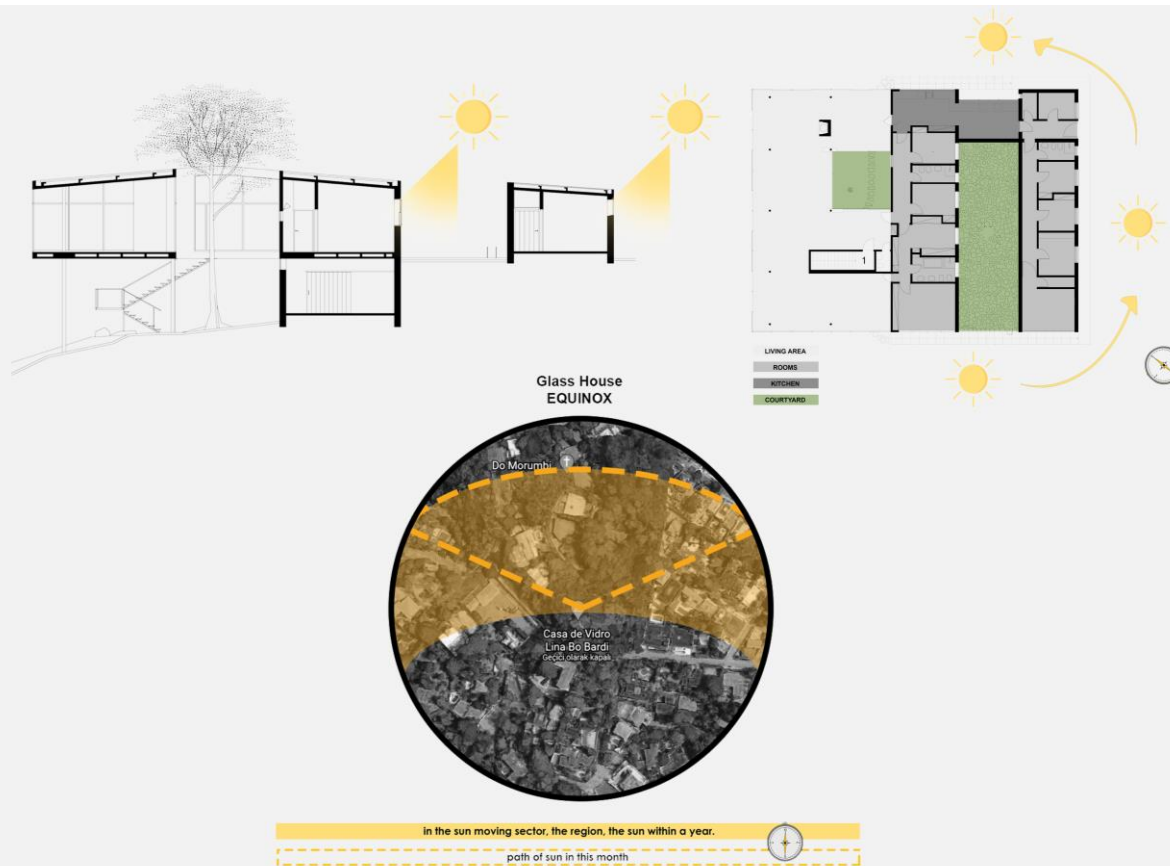


10 m

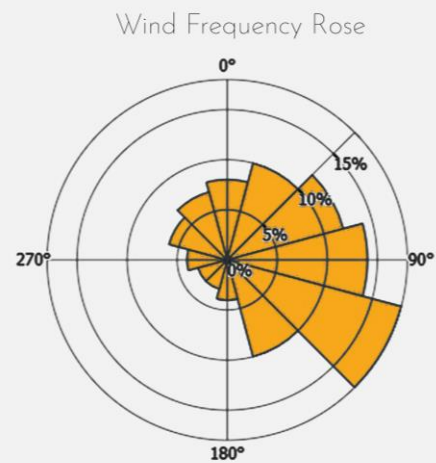


TECHNICAL  
DRAWINGS

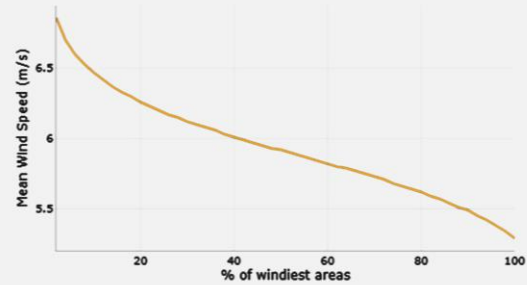




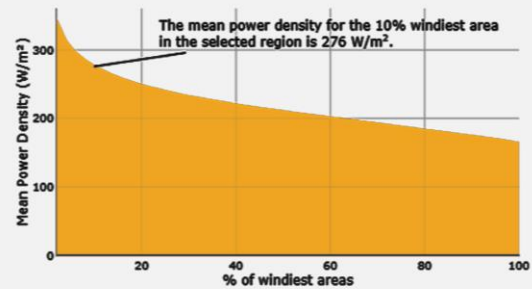
# SUN ANALYSIS



Mean Wind Speed at 100m



Mean Power Density at Height 100m



# WIND ANALYSIS

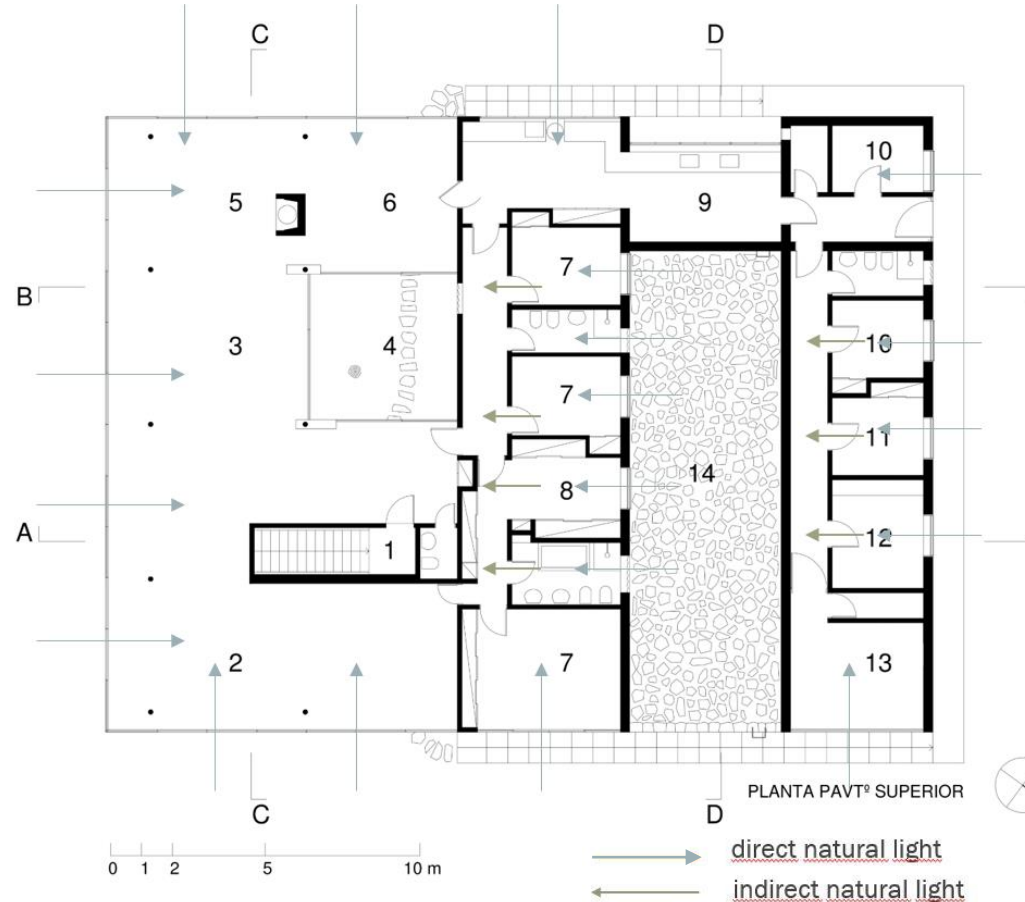


## SPACE USAGE ANALYSIS



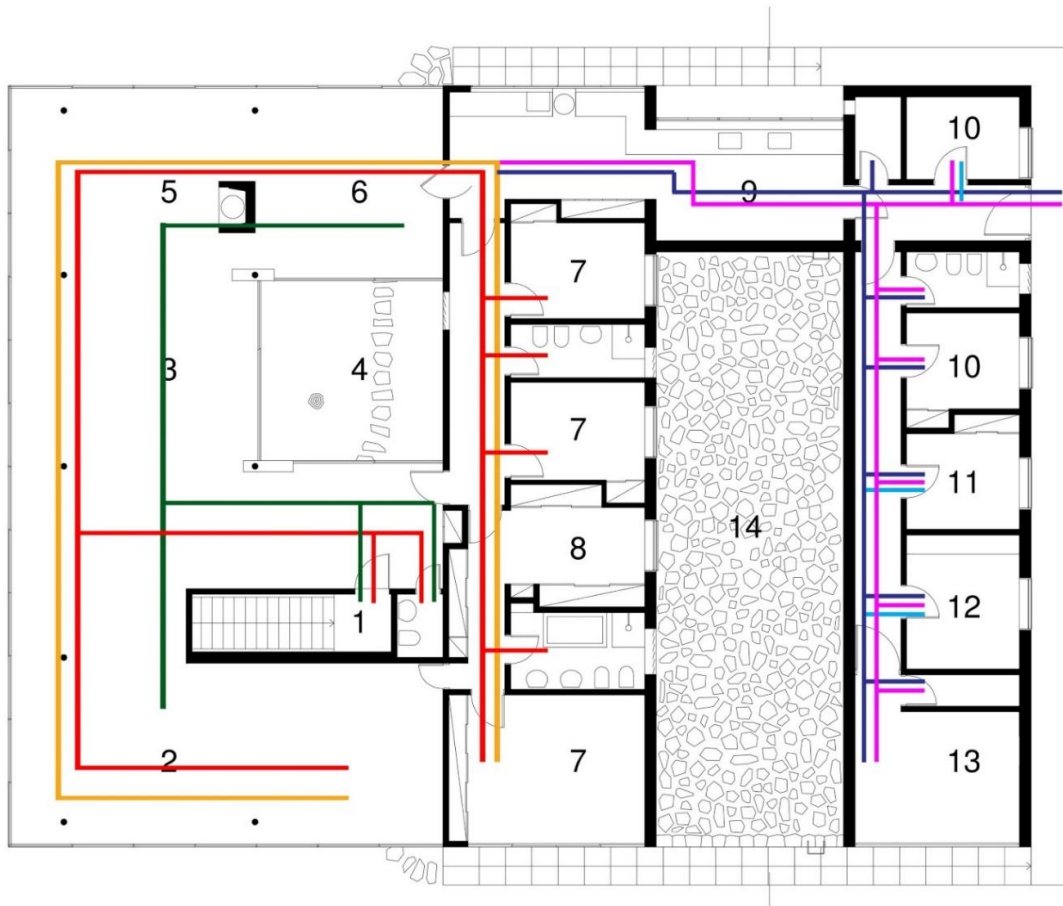
The visual analysis of the space of use allows us to understand its use in percentage of 34% for the intimate area, 41% for the social area, 20% for the service area.

## NATURAL LIGHT ANALYSIS



The visual analysis of the direct and indirect lighting source of the shows that almost the entire building is illuminated by natural light. Depending on the location of the sun, artificial lighting will almost not be needed during the day in this building where trying to maximum benefit from natural resources is attempted.





### Residents

access to all the dependencies of the house. however with differentiated time of parenry between environments.

sporadic stay areas

extended stay areas

transitional permanence areas

### Service

Access to all rooms of the house. however, longer transportation times in service areas.

transitional permanence areas

extended stay areas

### Visitor

restricted access to social areas

According to the analysis of the interior circulation in the building, more or less one circulation will be allowed in this scheme.

## CIRCULATION ANALIYSIS



## MISS FOX MELBOURN SELF CARE STUDIO

“MISS FOX is a multi-award-winning Self Care refuge located in the heart of Melbourne. Experience holistic and strengthening therapies with a package of luxury care, daily spa, skin and healthcare, carefully selected and magically combined for radiant beauty inside and out. A space to play, relax, rejuvenate and reconnect where everything starts you.”

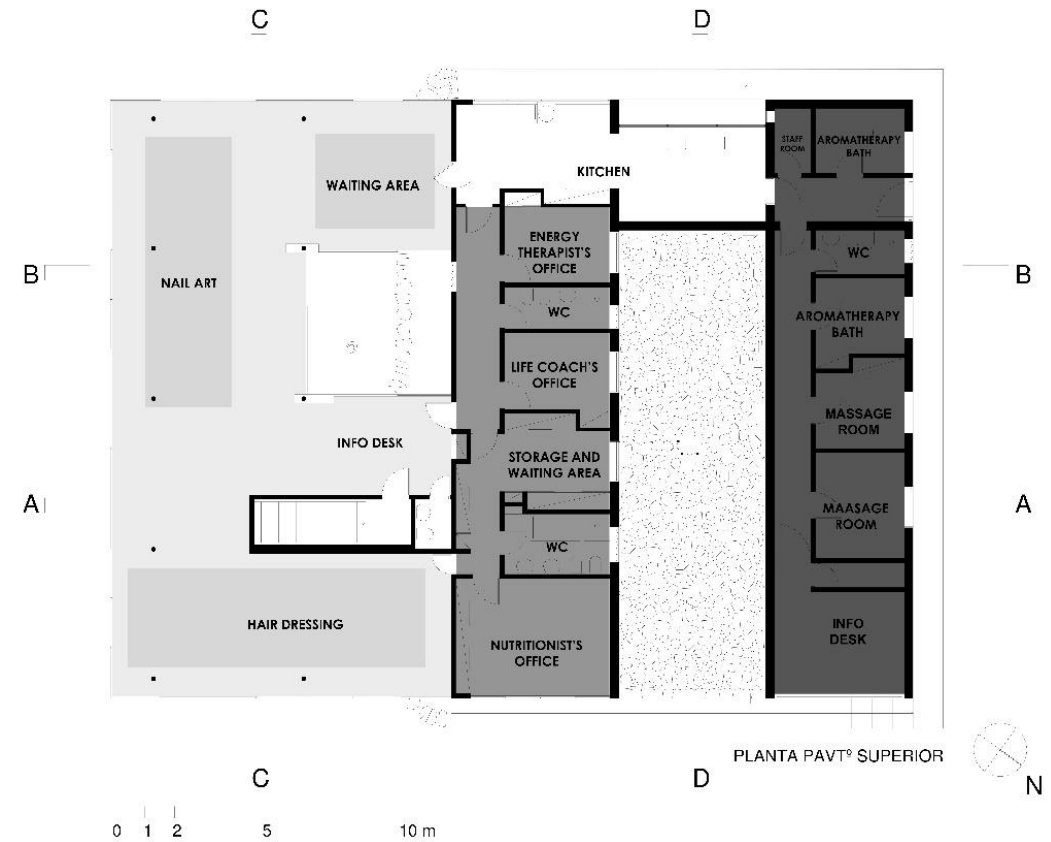
- Skin Clinic
- Day Spa
- Salon
- Health and Wellbeing



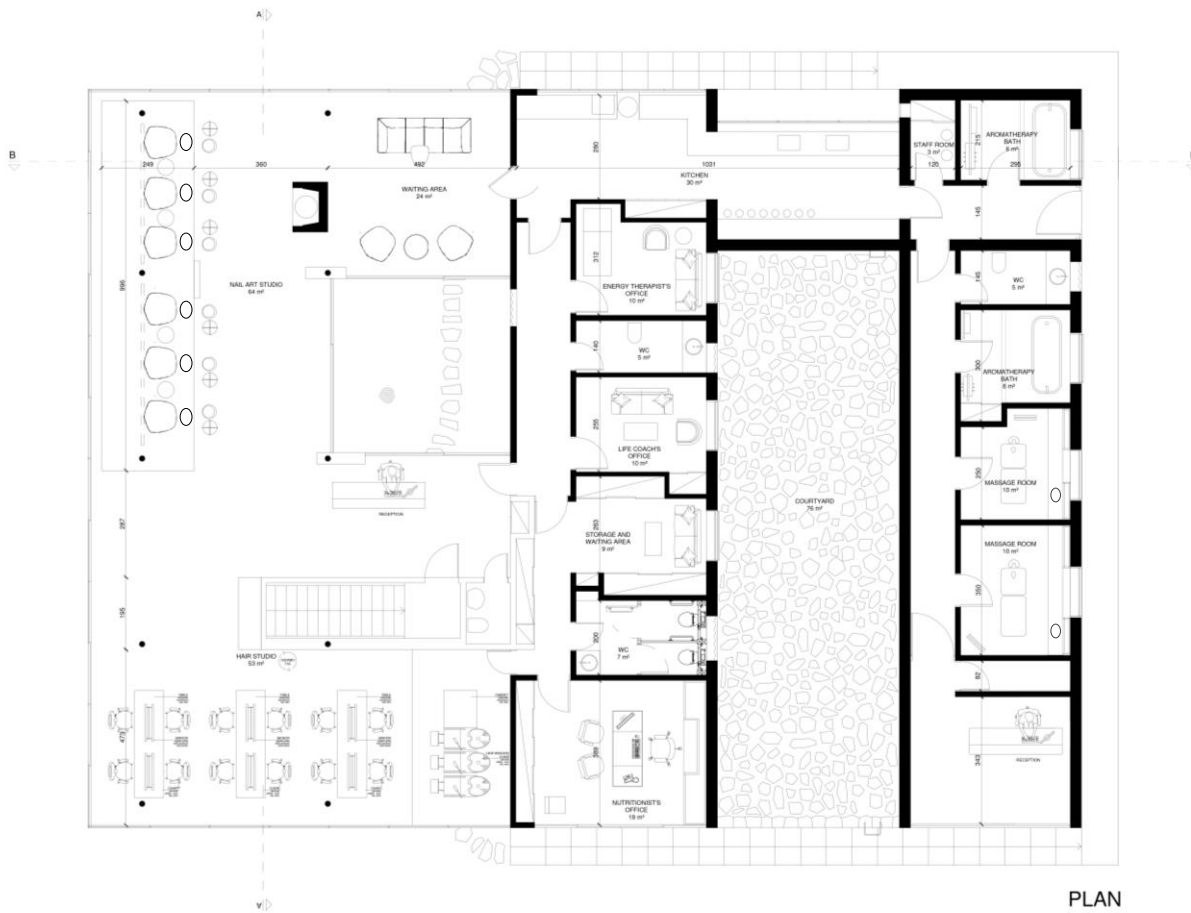
## DESIGN AND CONCEPT IDEA

A personal care studio that will support the family's luxurious life and accommodate popular needs will be designed at Morumbi, which is home to high-class and advanced economic families. In this studio, which aims at spiritual and physical care, will include hair, massage and nail sections, as well as services such as life coaching and dietician and aromatherapy baths will be prepared. Sustainability will be at the forefront in the selection of materials to be made by respecting the architect's decisions during the design process. The main concept of the project is to try to make the beauty of nature feel to the user in this important building in the nature and to ensure that they have a comfortable and luxurious day during this experience.





# BUILDING PROGRAMME



# TECHNICAL DRAWINGS

	SYMBOL	TYPE	QUANTITY	BRAND
L1		LED Fixture	4	Usaled
C1		Decorative Ceiling Panel	108	Yerevdekor
S1		Switch	13	Iluminashop
S2		Dimmer Switch	4	Iluminashop





SECTION AA



SECTION BB

COLORED TECHNICAL DRAWINGS

HAIR  
STUDIO



HAIR  
STUDIO





# MATERIAL AND FURNITURE BOARD

HAIR STUDIO



NAIL  
STUDIO



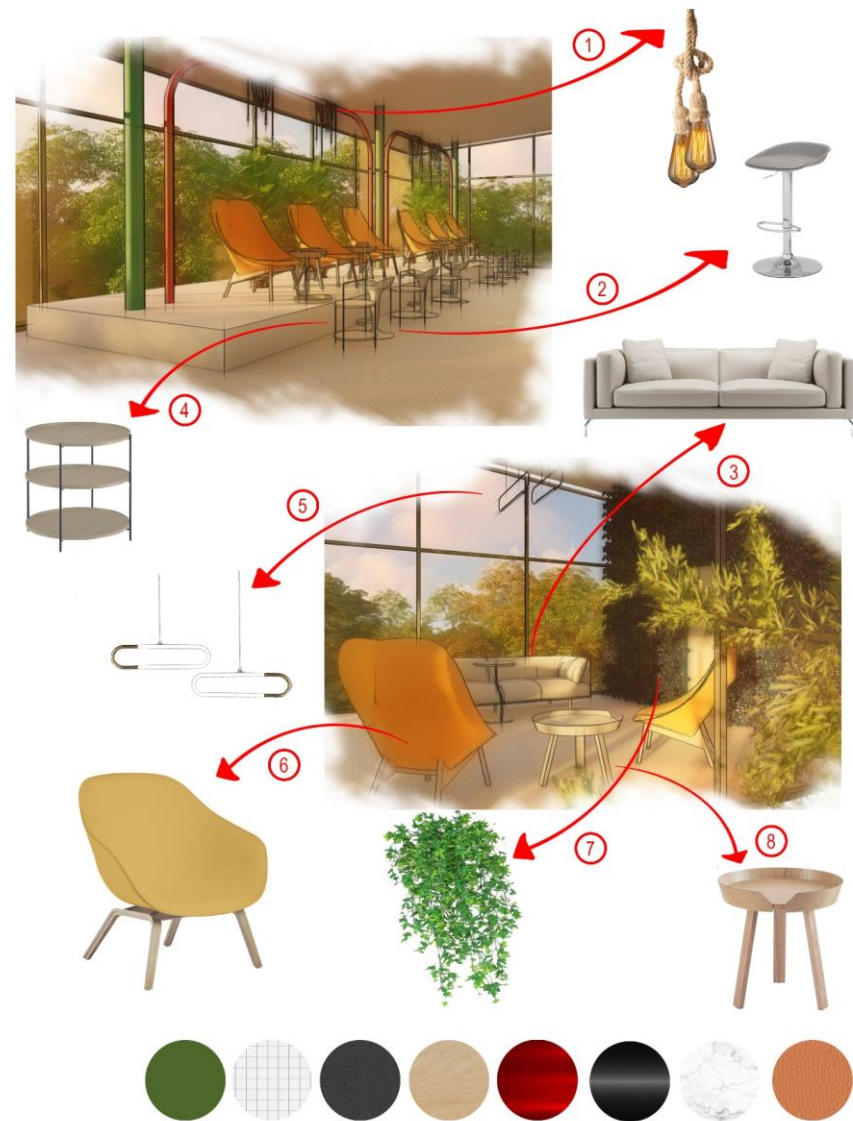
NAIL  
STUDIO





# MATERIAL AND FURNITURE BOARD

NAIL STUDIO  
AND WAITING AREA

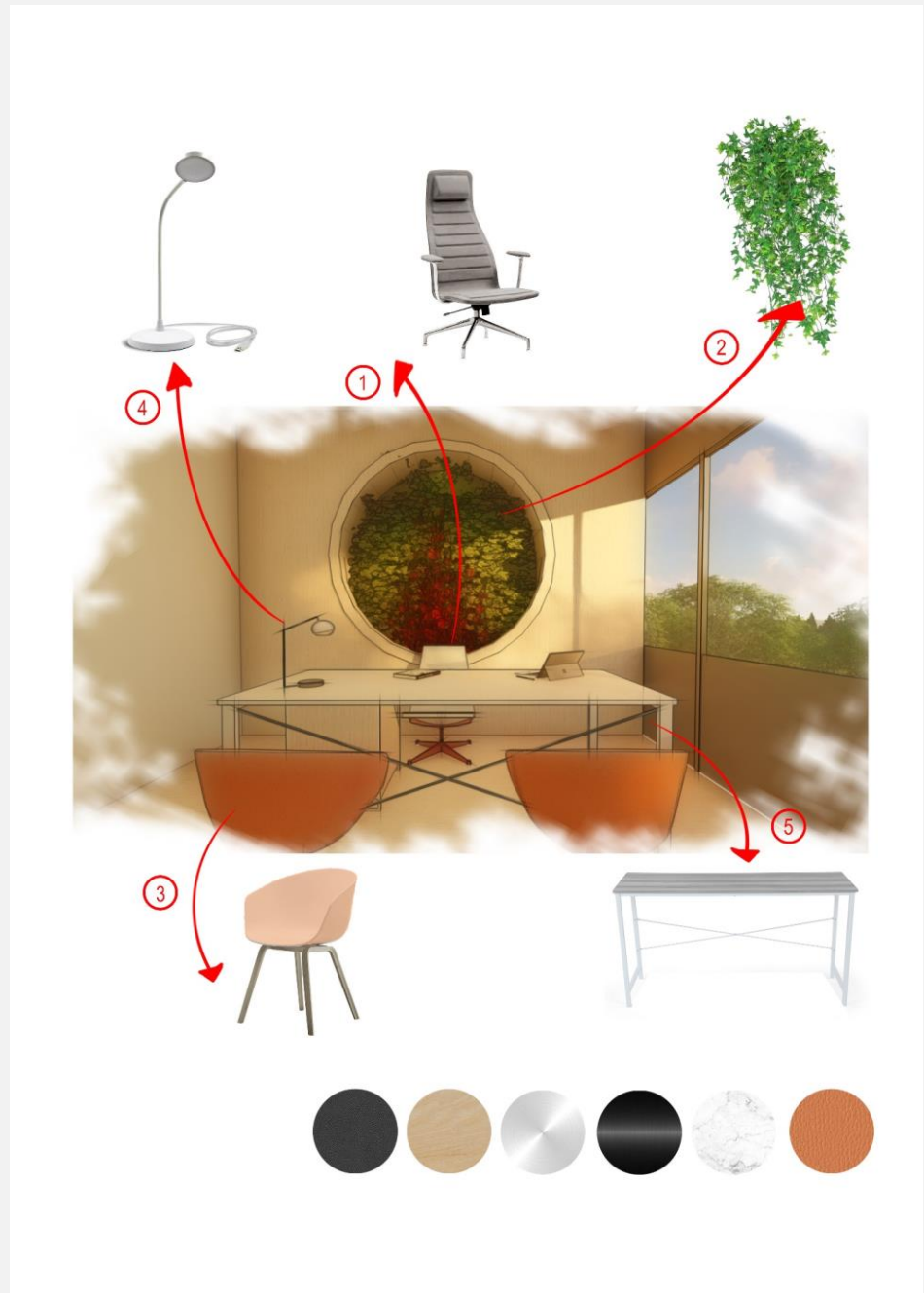


OFFICE



# MATERIAL AND FURNITURE BOARD

OFFICE





AROMA  
BATH



# MATERIAL AND FURNITURE BOARD

AROMATHERAPY BATH



MASSAGE  
ROOM





# MATERIAL AND FURNITURE BOARD

MASSAGE ROOM



# SOURCE

- [https://en.wikipedia.org/wiki/Lina\\_Bo\\_Bardi](https://en.wikipedia.org/wiki/Lina_Bo_Bardi)
- <https://www.archdaily.com/tag/lina-bo-bardi>
- <https://www.sciencedirect.com/science/article/pii/S1877916616300017>
- <https://www.archdaily.com.br/br/01-12802/classicos-da-arquitetura-casa-de-vidro-lina-bo-bardi>
- <https://www.vitruvius.com.br/revistas/read/arquitextos/07.082/265>
- <https://www.blogdaarquitetura.com/casa-de-vidro/>
- <https://www.missfox.com.au/>
- [https://www.tripadvisor.com.tr/Attraction\\_Review-g255100-d13276149-Reviews-Miss\\_Fox-Melbourne\\_Victoria.html](https://www.tripadvisor.com.tr/Attraction_Review-g255100-d13276149-Reviews-Miss_Fox-Melbourne_Victoria.html)
- <https://globalwindatlas.info/area/Brazil/S%C3%A3o%20Paulo>
- <http://suncalc.net/#/51.508,-0.125,2/2020.07.05/03:32>
- [https://pt.wikipedia.org/wiki/Est%C3%A1dio\\_C%C3%ADcero\\_Pompeu\\_de\\_Toledo](https://pt.wikipedia.org/wiki/Est%C3%A1dio_C%C3%ADcero_Pompeu_de_Toledo)